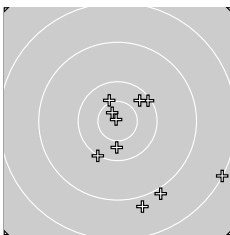
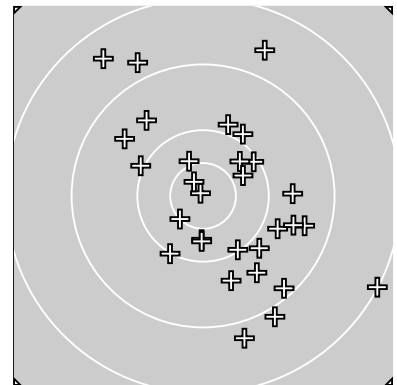
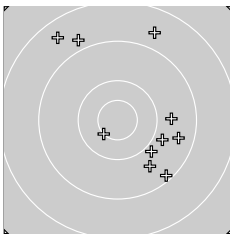


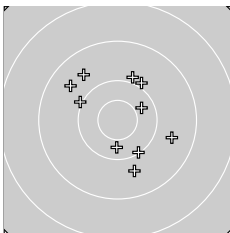
Ergebnis: **276** (291.8)
 Serien: 94 88 94
 Zähler: 12 12 6 0 0 0 0 0 0
 Innenzehner: 4
 weiteste: 7481 (4), 6450 (19), 6016 (18)
 beste Teiler 140.8 (9.) 636.0 (10.) 1243.0 (13.)
 Trefferlage 8.93 mm rechts, 1.54 mm tief
 Streuwert 25.93, horizontal: 23.24, vertikal: 28.37



Serie 1:
 10.0 ↙ 8.9 ↘ 10.1 ↗ 8.1 ↘ 10.4 ↓
 8.8 ↓ 10.3 ↗ 10.4 * 10.9 * 10.7 *
 beste Teiler 140.8 (9.) 636.0 (10.) 1421.8 (8.)
 Trefferlage 11.98 mm rechts, 12.77 mm tief
 Streuwert 24.30, horizontal: 22.89, vertikal: 25.64



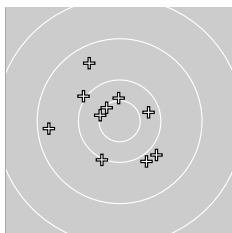
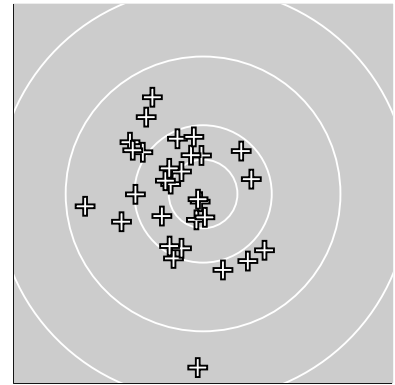
Serie 2:
 8.8 ↖ 9.8 ↘ 10.5 * 9.5 ↘ 9.2 ↘
 9.9 ↘ 9.6 ↘ 8.7 ↑ 8.5 ↖ 9.7 →
 beste Teiler 1243.0 (13.) 2920.8 (16.) 3098.9 (12.)
 Trefferlage 12.56 mm rechts, 4.23 mm hoch
 Streuwert 31.11, horizontal: 26.64, vertikal: 35.00



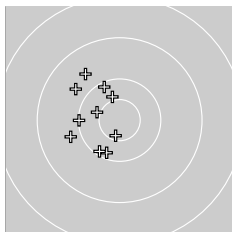
Serie 3:
 10.0 ↖ 9.6 ↖ 9.6 ↖ 9.9 ↑ 10.3 ↗
 9.9 ↗ 10.1 ↘ 9.6 ↘ 9.7 ↓ 10.3 ↓
 beste Teiler 1705.2 (25.) 1729.8 (30.) 2439.0 (27.)
 Trefferlage 2.26 mm rechts, 3.91 mm hoch
 Streuwert 21.58, horizontal: 20.77, vertikal: 22.37

Unterschrift des Schützen

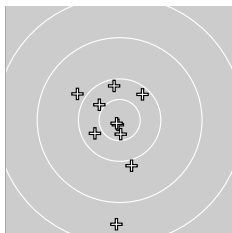
Ergebnis: **289** (303.2)
 Serien: 96 97 96
 Zähler: 20 9 1 0 0 0 0 0 0
 Innenzehner: 9
 weiteste: 6322 (25), 4316 (9), 3972 (1)
 beste Teiler 265.2 (29.) 299.9 (26.) 854.5 (30.)
 Trefferlage 8.29 mm links, 0.49 mm tief
 Streuwert 17.81, horizontal: 14.88, vertikal: 20.32



Serie 1:
 9.5 ↘ 10.0 ↙ 9.9 ↘ 10.5 * 10.5 *
 10.4 * 9.8 ↘ 10.0 ↖ 9.3 ← 10.3 →
 beste Teiler 1131.5 (5.) 1232.1 (4.) 1401.2 (6.)
 Trefferlage 5.80 mm links, 0.85 mm hoch
 Streuwert 19.82, horizontal: 20.32, vertikal: 19.30



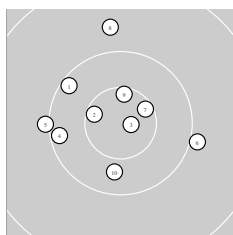
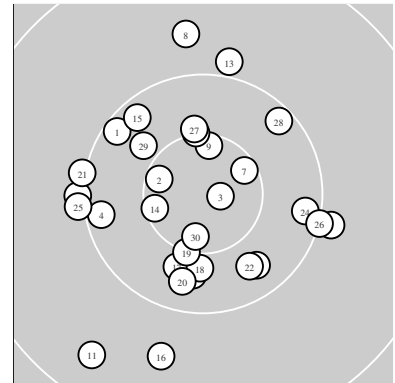
Serie 2:
 10.2 ↙ 10.1 ↙ 9.8 ← 10.2 ↖ 10.6 *
 10.1 ← 10.4 * 10.4 * 9.8 ↘ 9.7 ↘
 beste Teiler 974.5 (15.) 1452.9 (18.) 1476.4 (17.)
 Trefferlage 15.14 mm links, 2.72 mm hoch
 Streuwert 13.88, horizontal: 9.65, vertikal: 17.09



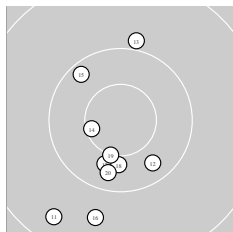
Serie 3:
 10.2 ↗ 10.2 ↑ 9.9 ↖ 10.3 ← 8.5 ↓
 10.8 * 10.4 ↖ 9.9 ↓ 10.9 * 10.6 *
 beste Teiler 265.2 (29.) 299.9 (26.) 854.5 (30.)
 Trefferlage 3.92 mm links, 5.06 mm tief
 Streuwert 19.45, horizontal: 11.26, vertikal: 25.09

Unterschrift des Schützen

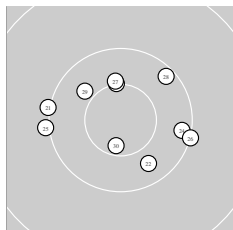
Ergebnis: **296** (307.4)
 Serien: 99 97 100
 Zähler: 26 4 0 0 0 0 0 0 0 0
 Innenzehner: 9
 weiteste: 4097 (11), 3509 (16), 3368 (8)
 beste Teiler 368.1 (3.) 906.0 (30.) 969.5 (2.)
 Trefferlage 3.02 mm links, 1.58 mm tief
 Streuwert 15.20, horizontal: 14.53, vertikal: 15.84



Serie 1:
 10.2 ↘ 10.6 * 10.8 * 10.2 ← 10.0 ←
 10.0 → 10.6 * 9.7 ↑ 10.6 * 10.3 ↓
 beste Teiler 368.1 (3.) 969.5 (2.) 995.5 (7.)
 Trefferlage 4.01 mm links, 3.59 mm hoch
 Streuwert 14.66, horizontal: 15.69, vertikal: 13.54



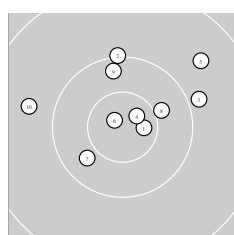
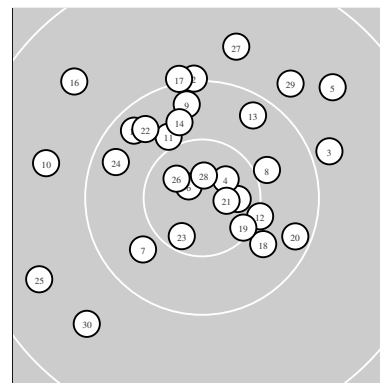
Serie 2:
 9.4 ↙ 10.3 ↘ 9.9 ↑ 10.6 * 10.2 ↖
 9.7 ↓ 10.4 ↓ 10.4 ↓ 10.5 * 10.3 ↓
 beste Teiler 1053.6 (14.) 1267.4 (19.) 1556.3 (18.)
 Trefferlage 5.32 mm links, 10.32 mm tief
 Streuwert 15.43, horizontal: 9.69, vertikal: 19.54



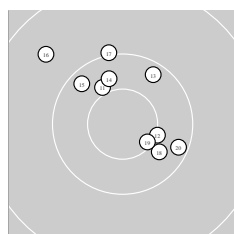
Serie 3:
 10.0 ← 10.3 ↘ 10.5 * 10.2 → 10.0 ←
 10.0 → 10.5 * 10.2 ↗ 10.4 ↖ 10.6 *
 beste Teiler 906.0 (30.) 1282.5 (23.) 1372.2 (27.)
 Trefferlage 0.25 mm rechts, 1.96 mm hoch
 Streuwert 14.76, horizontal: 17.92, vertikal: 10.70

Unterschrift des Schützen

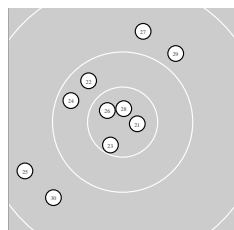
Ergebnis: **292** (306.7)
 Serien: 97 99 96
 Zähler: 22 8 0 0 0 0 0 0 0 0
 Innenzehner: 11
 weiteste: 3893 (25), 3697 (16), 3661 (5)
 beste Teiler 378.0 (6.) 480.6 (28.) 526.5 (21.)
 Trefferlage 1.12 mm links, 6.86 mm hoch
 Streuwert 15.46, horizontal: 16.43, vertikal: 14.42



Serie 1:
 10.7 * 10.0 ↑ 9.9 ↗ 10.7 * 9.6 ↗
 10.8 * 10.3 ↙ 10.4 * 10.2 ↑ 9.7 ↖
 beste Teiler 378.0 (6.) 642.3 (4.) 762.3 (1.)
 Trefferlage 2.78 mm rechts, 8.77 mm hoch
 Streuwert 15.26, horizontal: 18.30, vertikal: 11.43



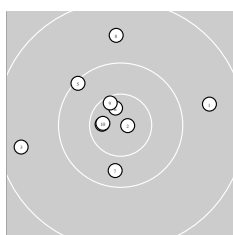
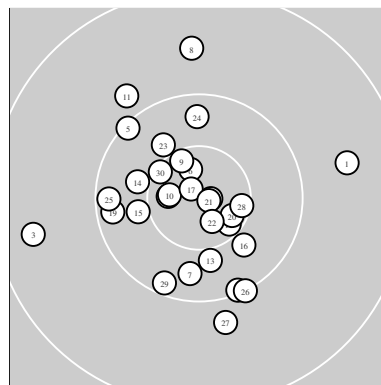
Serie 2:
 10.4 * 10.5 * 10.2 ↗ 10.3 ↑ 10.2 ↖
 9.6 ↘ 10.0 ↑ 10.4 ↘ 10.6 * 10.2 ↘
 beste Teiler 1086.8 (19.) 1301.7 (12.) 1491.1 (11.)
 Trefferlage 0.63 mm rechts, 8.32 mm hoch
 Streuwert 14.38, horizontal: 14.81, vertikal: 13.93



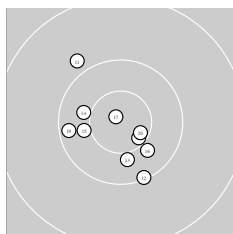
Serie 3:
 10.8 * 10.3 ↘ 10.6 * 10.2 ↖ 9.5 ↖
 10.7 * 9.7 ↑ 10.8 * 9.8 ↗ 9.6 ↖
 beste Teiler 480.6 (28.) 526.5 (21.) 684.0 (26.)
 Trefferlage 6.79 mm links, 3.50 mm hoch
 Streuwert 17.11, horizontal: 16.10, vertikal: 18.05

Unterschrift des Schützen

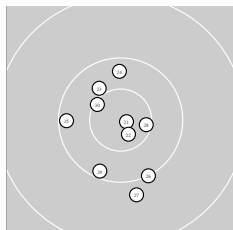
Ergebnis: **295** (309.8)
 Serien: 97 99 99
 Zähler: 25 5 0 0 0 0 0 0 0 0
 Innenzehner: 13
 weiteste: 4097 (3), 3672 (1), 3617 (8)
 beste Teiler 245.7 (21.) 284.5 (2.) 287.5 (17.)
 Trefferlage 3.00 mm links, 0.89 mm tief
 Streuwert 14.22, horizontal: 13.83, vertikal: 14.60



Serie 1:
 9.6 → 10.8 * 9.4 ← 10.7 * 10.1 ↖
 10.7 * 10.3 ↓ 9.6 ↑ 10.6 * 10.7 *
 beste Teiler 284.5 (2.) 716.6 (6.) 716.8 (10.)
 Trefferlage 4.33 mm links, 5.11 mm hoch
 Streuwert 16.78, horizontal: 18.64, vertikal: 14.67



Serie 2:
 9.9 ↖ 10.1 ↓ 10.4 ↓ 10.4 ← 10.4 *
 10.4 ↘ 10.8 * 10.6 * 10.2 ← 10.6 *
 beste Teiler 287.5 (17.) 903.6 (20.) 963.4 (18.)
 Trefferlage 3.15 mm links, 3.53 mm tief
 Streuwert 12.56, horizontal: 12.50, vertikal: 12.62

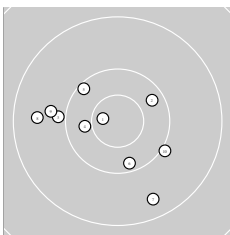
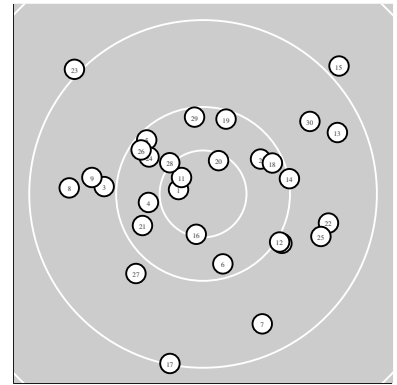


Serie 3:
 10.9 * 10.7 * 10.4 ↖ 10.2 ↑ 10.2 ←
 10.0 ↓ 9.8 ↓ 10.6 * 10.2 ↓ 10.5 *
 beste Teiler 245.7 (21.) 649.4 (22.) 1047.4 (28.)
 Trefferlage 1.51 mm links, 4.27 mm tief
 Streuwert 13.41, horizontal: 10.38, vertikal: 15.88

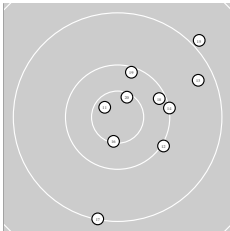
Unterschrift des Schützen

Meyton Elektronik

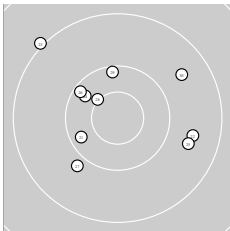
Ergebnis: **287** (298.9)
 Serien: 96 96 95
 Zähler: 18 11 1 0 0 0 0 0 0 0
 Innenzehner: 5
 weiteste: 5369 (15), 5151 (23), 4969 (17)
 beste Teiler 716.9 (1.) 778.4 (11.) 1055.8 (20.)
 Trefferlage 1.45 mm rechts, 1.63 mm hoch
 Streuwert 21.36, horizontal: 23.30, vertikal: 19.24



Serie 1:
 10.7 * 10.3 ↗ 9.9 ← 10.4 ← 10.1 ↘
 10.2 ↓ 9.4 ↓ 9.5 ← 9.8 ← 10.0 ↘
 beste Teiler 716.9 (1.) 1589.9 (4.) 1933.4 (2.)
 Trefferlage 7.59 mm links, 3.87 mm tief
 Streuwert 19.21, horizontal: 22.13, vertikal: 15.75



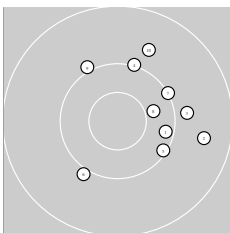
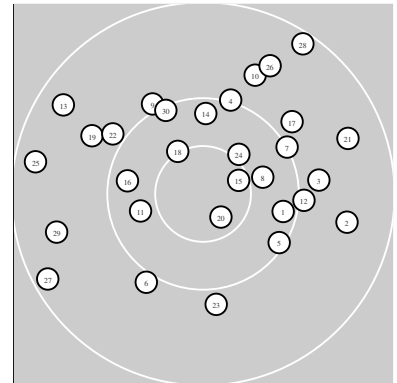
Serie 2:
 10.7 * 10.0 ↘ 9.4 ↗ 10.0 → 8.9 ↗
 10.5 * 9.1 ↓ 10.2 ↗ 10.1 ↑ 10.6 *
 beste Teiler 778.4 (11.) 1055.8 (20.) 1177.4 (16.)
 Trefferlage 13.79 mm rechts, 2.93 mm hoch
 Streuwert 20.78, horizontal: 17.69, vertikal: 23.47



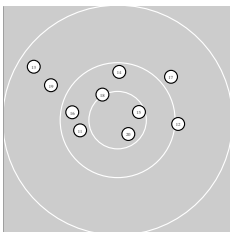
Serie 3:
 10.2 ↙ 9.6 → 9.0 ↘ 10.3 ↘ 9.6 →
 10.2 ↘ 9.9 ↙ 10.5 * 10.2 ↑ 9.6 ↗
 beste Teiler 1312.3 (28.) 1882.2 (24.) 1965.7 (21.)
 Trefferlage 1.84 mm links, 5.84 mm hoch
 Streuwert 22.50, horizontal: 25.96, vertikal: 18.40

Unterschrift des Schützen

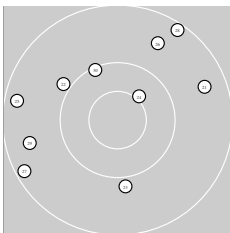
Ergebnis: **286** (297.7)
 Serien: 97 97 92
 Zähler: 16 14 0 0 0 0 0 0 0 0
 Innenzehner: 4
 weiteste: 4705 (28), 4623 (27), 4454 (25)
 beste Teiler 762.8 (20.) 994.1 (15.) 1292.7 (18.)
 Trefferlage 1.11 mm rechts, 7.26 mm hoch
 Streuwert 20.89, horizontal: 24.12, vertikal: 17.06



Serie 1:
 10.2 → 9.5 → 9.8 → 10.0 ↑ 10.1 ↘
 10.0 ↙ 10.0 ↗ 10.4 → 10.0 ↘ 9.7 ↑
 beste Teiler 1619.0 (8.) 2140.5 (1.) 2358.7 (5.)
 Trefferlage 13.89 mm rechts, 5.14 mm hoch
 Streuwert 17.29, horizontal: 16.94, vertikal: 17.63



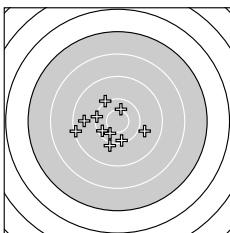
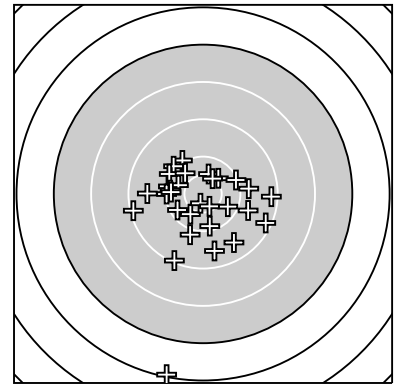
Serie 2:
 10.3 ← 10.0 → 9.3 ↘ 10.2 ↑ 10.6 *
 10.2 ← 9.9 ↗ 10.5 * 9.8 ↘ 10.7 *
 beste Teiler 762.8 (20.) 994.1 (15.) 1292.7 (18.)
 Trefferlage 4.39 mm links, 8.41 mm hoch
 Streuwert 16.81, horizontal: 21.14, vertikal: 10.88



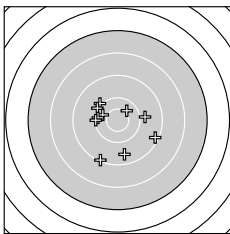
Serie 3:
 9.4 → 9.9 ↘ 9.9 ↓ 10.4 * 9.3 ←
 9.6 ↗ 9.2 ↙ 9.2 ↗ 9.5 ← 10.1 ↘
 beste Teiler 1393.3 (24.) 2387.7 (30.) 2829.5 (22.)
 Trefferlage 6.16 mm links, 8.23 mm hoch
 Streuwert 26.16, horizontal: 29.45, vertikal: 22.38

Unterschrift des Schützen

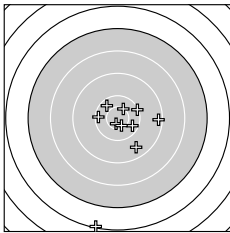
Ergebnis: **286** (295.9)
 Serien: 96 96 94
 Zähler: 19 10 0 0 1 0 0 0 0 0
 Innenzehner: 5
 weiteste: 12350 (25), 4861 (17), 4804 (6)
 beste Teiler 649.4 (22.) 935.6 (26.) 1205.9 (30.)
 Trefferlage 3.16 mm links, 8.21 mm tief
 Streuwert 25.15, horizontal: 23.06, vertikal: 27.07



Serie 1:
 10.2 ↓ 10.5 * 9.8 → 10.1 ← 10.4 ↘
 9.1 ← 9.9 ↓ 9.6 ← 10.2 ↗ 10.0 ↖
 beste Teiler 1383.8 (2.) 1597.8 (5.) 2020.3 (9.)
 Trefferlage 11.70 mm links, 5.43 mm tief
 Streuwert 18.99, horizontal: 21.91, vertikal: 15.52



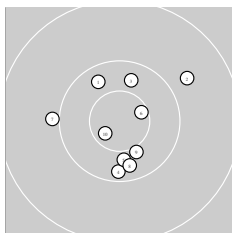
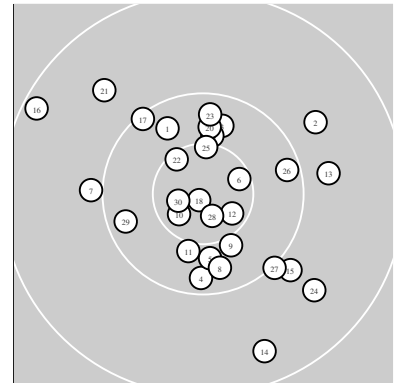
Serie 2:
 10.0 ↖ 10.0 ↖ 10.3 ↖ 9.2 → 10.4 *
 9.5 ↓ 9.1 ↓ 9.8 → 10.2 ← 10.1 ←
 beste Teiler 1465.2 (15.) 1753.7 (13.) 2218.4 (19.)
 Trefferlage 3.40 mm links, 4.80 mm tief
 Streuwert 23.17, horizontal: 24.44, vertikal: 21.82



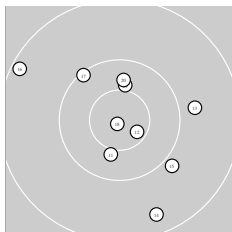
Serie 3:
 10.3 ↘ 10.7 * 10.2 ← 9.5 ↘ 6.1 ↓
 10.6 * 10.1 → 9.2 → 10.3 ↖ 10.5 *
 beste Teiler 649.4 (22.) 935.6 (26.) 1205.9 (30.)
 Trefferlage 5.61 mm rechts, 14.39 mm tief
 Streuwert 32.01, horizontal: 21.68, vertikal: 39.74

Unterschrift des Schützen

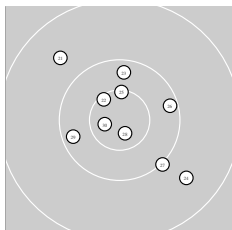
Ergebnis: **292** (306.1)
 Serien: 98 96 98
 Zähler: 22 8 0 0 0 0 0 0 0 0
 Innenzehner: 11
 weiteste: 4652 (16), 4197 (14), 3657 (24)
 beste Teiler 182.3 (18.) 590.5 (28.) 638.7 (30.)
 Trefferlage 1.48 mm rechts, 0.14 mm tief
 Streuwert 16.54, horizontal: 16.66, vertikal: 16.42



Serie 1:
 10.3 ↖ 9.7 ↗ 10.3 ↑ 10.2 ↓ 10.4 ↓
 10.6 * 9.9 ← 10.3 ↓ 10.4 * 10.7 *
 beste Teiler 781.2 (10.) 975.4 (6.) 1454.3 (9.)
 Trefferlage 1.15 mm rechts, 1.73 mm tief
 Streuwert 14.73, horizontal: 14.27, vertikal: 15.17



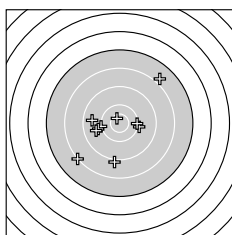
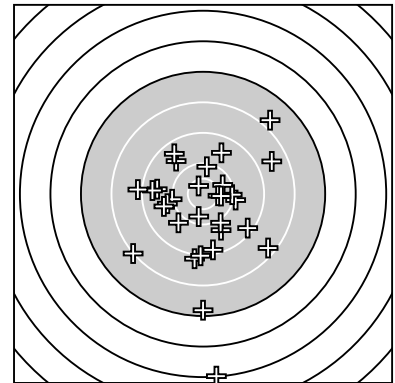
Serie 2:
 10.4 * 10.6 * 9.8 → 9.4 ↘ 9.9 ↘
 9.2 ↖ 10.1 ↖ 10.9 * 10.4 * 10.3 ↑
 beste Teiler 182.3 (18.) 870.6 (12.) 1465.3 (19.)
 Trefferlage 1.84 mm rechts, 0.25 mm tief
 Streuwert 19.84, horizontal: 20.16, vertikal: 19.51



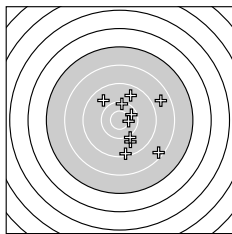
Serie 3:
 9.6 ↖ 10.6 * 10.2 ↑ 9.6 ↘ 10.5 *
 10.2 → 10.0 ↘ 10.7 * 10.2 ← 10.7 *
 beste Teiler 590.5 (28.) 638.7 (30.) 1080.8 (22.)
 Trefferlage 1.46 mm rechts, 1.54 mm hoch
 Streuwert 16.37, horizontal: 16.86, vertikal: 15.87

Unterschrift des Schützen

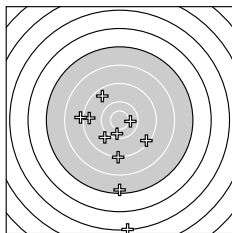
Ergebnis: **267** (279.5)
 Serien: 90 92 85
 Zähler: 10 12 5 2 0 1 0 0 0 0
 Innenzehner: 3
 weiteste: 14961 (25), 9523 (23), 8160 (2)
 beste Teiler 749.5 (5.) 1234.9 (17.) 1481.0 (29.)
 Trefferlage 0.07 mm rechts, 13.83 mm tief
 Streuwert 35.98, horizontal: 30.18, vertikal: 40.97



Serie 1:
 10.0 ← 7.8 ↗ 10.0 → 9.8 ← 10.7 *
 9.6 ← 8.1 ↙ 8.9 ↓ 9.7 ← 10.1 →
 beste Teiler 749.5 (5.) 2384.7 (10.) 2573.3 (1.)
 Trefferlage 8.67 mm links, 5.92 mm tief
 Streuwert 32.99, horizontal: 34.67, vertikal: 31.21



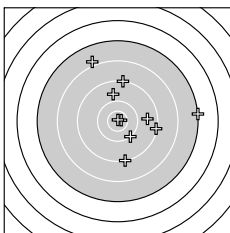
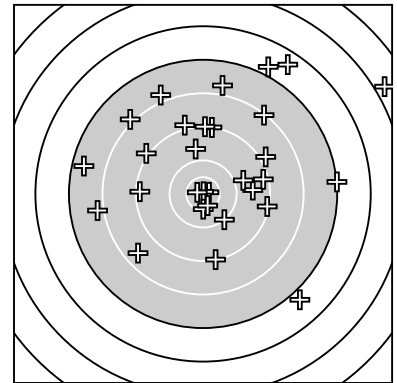
Serie 2:
 9.6 ↗ 10.1 ↑ 10.3 ↘ 8.3 ↘ 9.7 ↖
 8.6 ↘ 10.5 * 9.7 ↘ 10.0 ↘ 9.2 ↓
 beste Teiler 1234.9 (17.) 1768.7 (13.) 2245.3 (12.)
 Trefferlage 17.11 mm rechts, 2.80 mm tief
 Streuwert 27.11, horizontal: 22.84, vertikal: 30.80



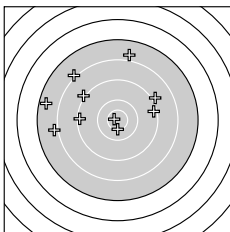
Serie 3:
 9.2 ↘ 9.4 ↖ 7.3 ↓ 10.3 ↓ 5.1 ↓
 9.4 ← 9.0 ↓ 8.9 ← 10.4 * 9.8 ↙
 beste Teiler 1481.0 (29.) 1889.4 (24.) 3106.7 (30.)
 Trefferlage 8.20 mm links, 32.77 mm tief
 Streuwert 42.48, horizontal: 26.97, vertikal: 53.69

Unterschrift des Schützen

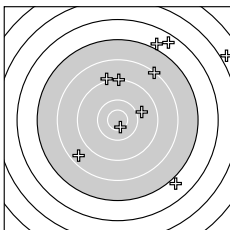
Ergebnis: **247** (261.9)
 Serien: 89 84 74
 Zähler: 6 10 5 5 3 0 1 0 0 0
 Innenzehner: 5
 weiteste: 15721 (27), 11524 (25), 10693 (30)
 beste Teiler 163.5 (9.) 450.7 (17.) 456.6 (6.)
 Trefferlage 10.40 mm rechts, 20.28 mm hoch
 Streuwert 46.61, horizontal: 50.06, vertikal: 42.89



Serie 1:
 7.9 ↖ 9.6 → 7.1 → 9.1 ↑ 9.1 →
 10.8 * 10.1 ↘ 9.1 ↓ 10.9 * 9.7 ↑
 beste Teiler 163.5 (9.) 456.6 (6.) 2491.1 (7.)
 Trefferlage 18.42 mm rechts, 9.39 mm hoch
 Streuwert 35.55, horizontal: 36.00, vertikal: 35.09



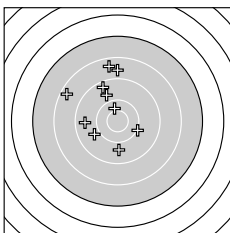
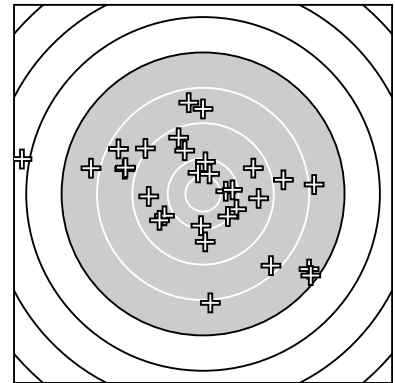
Serie 2:
 8.9 ↗ 9.0 ↖ 7.9 ← 8.0 ↖ 9.2 →
 7.4 ← 10.8 * 10.5 * 7.8 ↑ 9.2 ←
 beste Teiler 450.7 (17.) 1135.0 (18.) 4618.7 (15.)
 Trefferlage 20.94 mm links, 20.49 mm hoch
 Streuwert 40.15, horizontal: 48.40, vertikal: 29.69



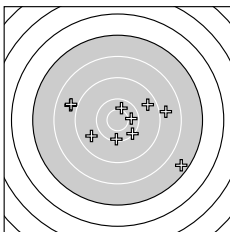
Serie 3:
 6.8 ↗ 8.4 ↖ 10.6 * 8.1 ↗ 6.5 ↗
 9.1 ↑ 4.8 ↗ 8.9 ↑ 9.8 → 6.8 ↘
 beste Teiler 933.8 (23.) 3163.8 (29.) 5014.0 (26.)
 Trefferlage 33.74 mm rechts, 30.96 mm hoch
 Streuwert 55.79, horizontal: 51.65, vertikal: 59.65

Unterschrift des Schützen

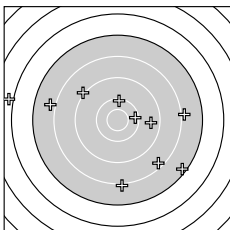
Ergebnis: **258** (271.5)
 Serien: 89 89 80
 Zähler: 8 9 8 4 0 1 0 0 0 0
 Innenzehner: 1
 weiteste: 13038 (29), 9554 (27), 9186 (16)
 beste Teiler 1485.6 (17.) 1532.6 (4.) 1617.8 (15.)
 Trefferlage 1.99 mm links, 2.28 mm hoch
 Streuwert 41.02, horizontal: 47.39, vertikal: 33.46



Serie 1:
 8.5 ↑ 9.7 ↓ 9.5 ← 10.4 ↑ 10.0 ↘
 9.7 ↖ 8.7 ↑ 8.4 ↗ 9.8 ↙ 9.3 ↗
 beste Teiler 1532.6 (4.) 2598.4 (5.) 3132.8 (9.)
 Trefferlage 14.43 mm links, 17.96 mm hoch
 Streuwert 28.53, horizontal: 23.22, vertikal: 32.99



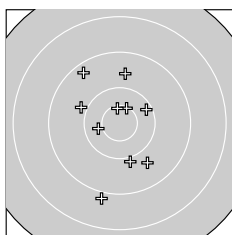
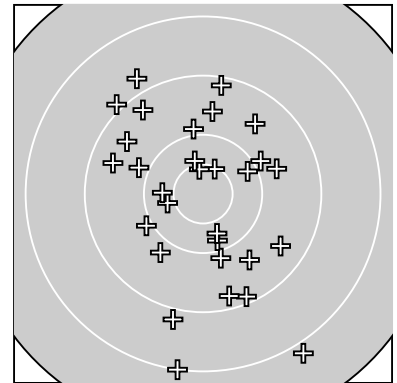
Serie 2:
 9.6 ↙ 8.7 ↖ 8.8 → 8.7 ↗ 10.4 →
 7.4 ↘ 10.4 * 10.1 ↓ 10.1 ↘ 9.5 →
 beste Teiler 1485.6 (17.) 1617.8 (15.) 2247.7 (18.)
 Trefferlage 6.30 mm rechts, 2.98 mm tief
 Streuwert 35.31, horizontal: 43.87, vertikal: 23.86



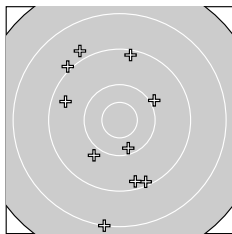
Serie 3:
 10.2 → 9.0 ↖ 7.8 ← 8.3 ↘ 7.9 →
 10.1 ↑ 7.2 ↘ 8.0 ↓ 5.8 ← 9.5 →
 beste Teiler 2098.5 (21.) 2275.2 (26.) 3938.4 (30.)
 Trefferlage 2.15 mm rechts, 8.13 mm tief
 Streuwert 54.91, horizontal: 67.13, vertikal: 39.04

Unterschrift des Schützen

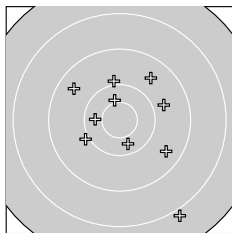
Ergebnis: **275** (289.3)
 Serien: 93 89 93
 Zähler: 10 16 3 1 0 0 0 0 0 0
 Innenzehner: 3
 weiteste: 7960 (23), 7506 (13), 5615 (14)
 beste Teiler 1052.6 (9.) 1160.8 (6.) 1435.0 (28.)
 Trefferlage 1.24 mm links, 2.05 mm tief
 Streuwert 28.03, horizontal: 21.98, vertikal: 32.99



Serie 1:
 9.9 ↘ 9.3 ↖ 9.7 ↑ 8.9 ↓ 10.2 ↗
 10.5 * 10.4 ← 9.7 ↘ 10.6 * 9.9 ↖
 beste Teiler 1052.6 (9.) 1160.8 (6.) 1547.1 (7.)
 Trefferlage 2.68 mm links, 0.01 mm tief
 Streuwert 23.31, horizontal: 16.78, vertikal: 28.38



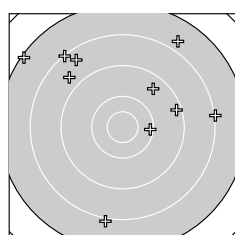
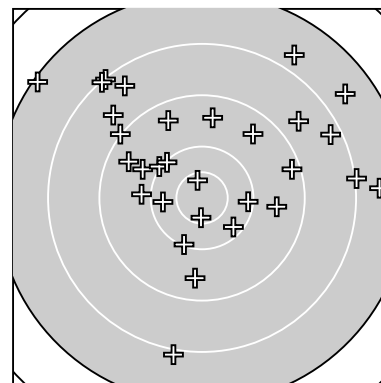
Serie 2:
 9.2 ↘ 9.2 ↑ 8.1 ↓ 8.8 ↖ 9.8 ↗
 10.2 ↓ 9.5 ↖ 9.3 ↓ 9.0 ↖ 9.9 ↗
 beste Teiler 2064.8 (16.) 2807.2 (20.) 3065.1 (15.)
 Trefferlage 6.37 mm links, 4.60 mm tief
 Streuwert 34.21, horizontal: 22.97, vertikal: 42.58



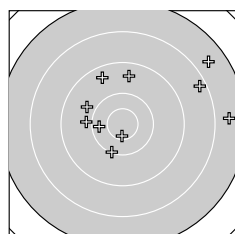
Serie 3:
 9.5 ↖ 10.0 ← 7.9 ↘ 9.7 → 10.3 ←
 10.0 ↑ 9.5 ↘ 10.4 * 10.3 ↓ 9.6 ↗
 beste Teiler 1435.0 (28.) 1721.7 (25.) 1774.9 (29.)
 Trefferlage 5.34 mm rechts, 1.53 mm tief
 Streuwert 27.78, horizontal: 25.84, vertikal: 29.60

Unterschrift des Schützen

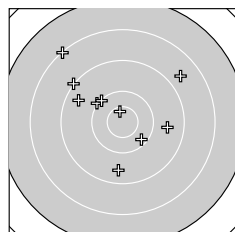
Ergebnis: **262** (273.2)
 Serien: 82 88 92
 Zähler: 8 10 8 4 0 0 0 0 0 0
 Innenzehner: 2
 weiteste: 9797 (7), 8656 (15), 8615 (11)
 beste Teiler 882.6 (21.) 964.4 (20.) 1915.1 (14.)
 Trefferlage 1.36 mm rechts, 17.50 mm hoch
 Streuwert 37.26, horizontal: 42.02, vertikal: 31.80



Serie 1:
 7.7 ↗ 9.2 → 8.7 ↘ 9.5 ↗ 8.0 →
 8.4 ↘ 7.1 ↘ 10.1 → 8.0 ↓ 8.1 ↘
 beste Teiler 2250.6 (8.) 3980.0 (4.) 4594.2 (2.)
 Trefferlage 1.07 mm links, 25.49 mm hoch
 Streuwert 46.75, horizontal: 50.33, vertikal: 42.87



Serie 2:
 7.6 ↗ 9.4 ↘ 10.1 ↓ 10.3 ← 7.6 →
 9.5 ↑ 8.3 → 9.9 ← 9.8 ↘ 10.6 *
 beste Teiler 964.4 (20.) 1915.1 (14.) 2433.8 (13.)
 Trefferlage 12.07 mm rechts, 14.42 mm hoch
 Streuwert 35.31, horizontal: 43.76, vertikal: 24.05

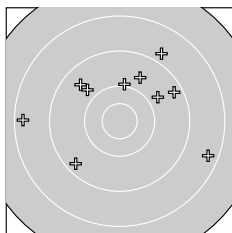
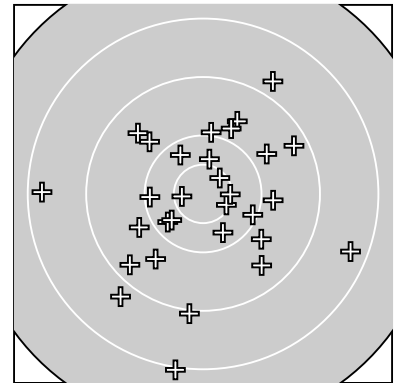


Serie 3:
 10.6 * 10.0 ↘ 8.7 ↗ 9.5 ↘ 10.2 ↘
 10.1 ↘ 9.5 ↓ 9.6 → 9.0 ↘ 8.1 ↘
 beste Teiler 882.6 (21.) 2081.7 (25.) 2433.2 (26.)
 Trefferlage 6.91 mm links, 12.59 mm hoch
 Streuwert 29.70, horizontal: 32.09, vertikal: 27.09

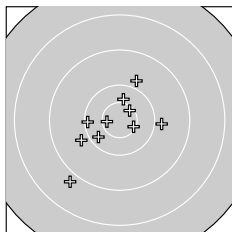
Unterschrift des Schützen

Meyton Elektronik

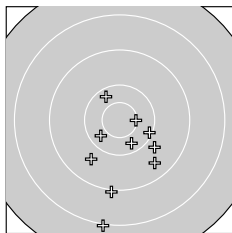
Ergebnis: **277** (291.3)
 Serien: 88 95 94
 Zähler: 12 13 5 0 0 0 0 0 0 0
 Innenzehner: 5
 weiteste: 7617 (27), 6891 (6), 6773 (2)
 beste Teiler 912.2 (11.) 987.4 (20.) 1102.7 (15.)
 Trefferlage 0.29 mm rechts, 3.92 mm tief
 Streuwert 27.10, horizontal: 27.02, vertikal: 27.17



Serie 1:
 9.3 ↙ 8.4 → 9.5 ↘ 9.8 ↘ 9.7 ↗
 8.3 ← 9.8 ↗ 8.8 ↗ 9.3 ↗ 10.0 ↑
 beste Teiler 2655.6 (10.) 3196.4 (4.) 3215.1 (7.)
 Trefferlage 2.62 mm rechts, 13.72 mm hoch
 Streuwert 33.18, horizontal: 39.88, vertikal: 24.73



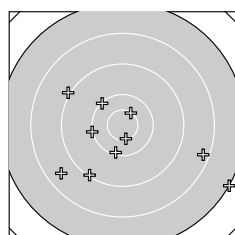
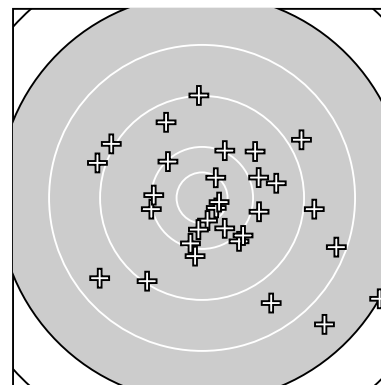
Serie 2:
 10.6 * 9.9 → 10.1 ← 10.4 * 10.6 *
 9.8 ↗ 10.3 ↙ 8.8 ↙ 9.8 ↙ 10.6 *
 beste Teiler 912.2 (11.) 987.4 (20.) 1102.7 (15.)
 Trefferlage 4.77 mm links, 3.04 mm tief
 Streuwert 19.81, horizontal: 20.53, vertikal: 19.06



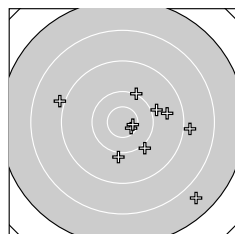
Serie 3:
 10.5 * 9.8 ↘ 9.0 ↓ 10.3 ↙ 9.5 ↘
 10.3 ↘ 8.0 ↓ 10.3 ↘ 9.7 ↙ 10.1 →
 beste Teiler 1163.1 (21.) 1746.5 (24.) 1860.5 (28.)
 Trefferlage 3.02 mm rechts, 22.44 mm tief
 Streuwert 22.07, horizontal: 17.25, vertikal: 26.01

Unterschrift des Schützen

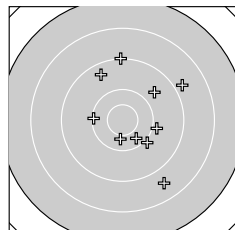
Ergebnis: **272** (285.4)
 Serien: 91 89 92
 Zähler: 12 10 6 2 0 0 0 0 0 0
 Innenzehner: 4
 weiteste: 10012 (10), 8627 (20), 7010 (3)
 beste Teiler 851.1 (11.) 859.3 (17.) 1141.6 (6.)
 Trefferlage 9.51 mm rechts, 5.74 mm tief
 Streuwert 30.97, horizontal: 34.10, vertikal: 27.48



Serie 1:
 10.0 ← 9.0 ↘ 8.3 → 10.1 ↘ 9.1 ↙
 10.5 * 10.5 * 8.5 ↙ 10.1 ↓ 7.1 →
 beste Teiler 1141.6 (6.) 1196.5 (7.) 2299.2 (9.)
 Trefferlage 0.66 mm links, 13.83 mm tief
 Streuwert 36.67, horizontal: 44.87, vertikal: 26.01



Serie 2:
 10.6 * 10.0 ↗ 9.6 → 9.9 ↓ 9.9 →
 9.9 ↘ 10.6 * 8.9 ← 8.9 → 7.6 ↘
 beste Teiler 851.1 (11.) 859.3 (17.) 2573.1 (12.)
 Trefferlage 16.90 mm rechts, 6.66 mm tief
 Streuwert 28.65, horizontal: 31.75, vertikal: 25.18

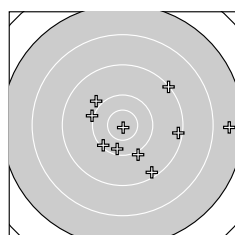
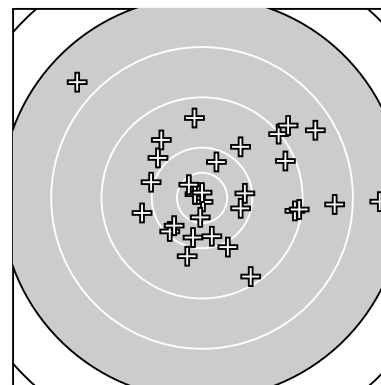


Serie 3:
 10.3 ↘ 10.1 ← 9.9 → 8.6 ↘ 10.0 ↘
 8.8 ↗ 9.7 ↗ 9.4 ↘ 10.4 ↓ 9.1 ↑
 beste Teiler 1562.1 (29.) 1859.2 (21.) 2372.0 (22.)
 Trefferlage 12.31 mm rechts, 3.28 mm hoch
 Streuwert 27.38, horizontal: 23.26, vertikal: 30.96

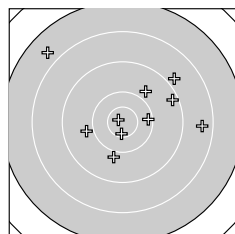
Unterschrift des Schützen

Meyton Elektronik

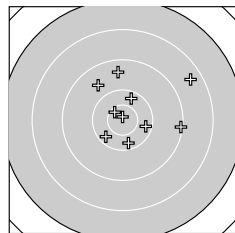
Ergebnis: **277** (290.4)
 Serien: 93 89 95
 Zähler: 14 11 3 2 0 0 0 0 0 0
 Innenzehner: 5
 weiteste: 8838 (3), 8465 (16), 6601 (19)
 beste Teiler 205.0 (5.) 264.0 (29.) 396.3 (15.)
 Trefferlage 10.67 mm rechts, 4.22 mm hoch
 Streuwert 27.90, horizontal: 32.30, vertikal: 22.66



Serie 1:
 9.1 ↗ 9.2 → 7.5 → 10.2 ↓ 10.9 *
 10.0 ↖ 9.2 ↘ 10.1 ↙ 9.9 ↘ 10.0 ↘
 beste Teiler 205.0 (5.) 2020.7 (4.) 2315.4 (8.)
 Trefferlage 14.22 mm rechts, 5.07 mm tief
 Streuwert 29.41, horizontal: 35.77, vertikal: 21.21



Serie 2:
 9.9 ↓ 8.8 ↗ 10.2 → 10.6 * 10.8 *
 7.7 ↘ 9.2 → 9.8 ← 8.4 → 9.8 ↗
 beste Teiler 396.3 (15.) 971.2 (14.) 2139.9 (13.)
 Trefferlage 8.68 mm rechts, 9.20 mm hoch
 Streuwert 32.08, horizontal: 37.67, vertikal: 25.28

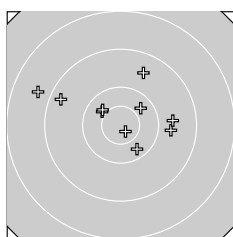
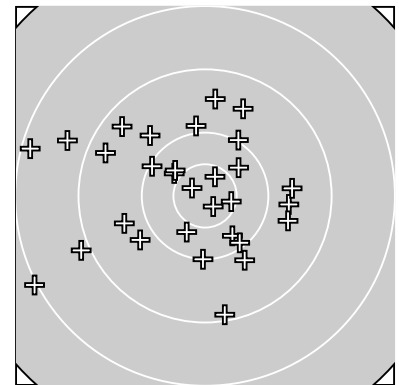


Serie 3:
 10.2 → 10.2 ↓ 9.5 ↑ 10.6 * 8.4 ↗
 10.2 ↙ 10.3 ↑ 9.1 → 10.9 * 9.7 ↘
 beste Teiler 264.0 (29.) 929.1 (24.) 1923.9 (27.)
 Trefferlage 9.13 mm rechts, 8.55 mm hoch
 Streuwert 23.06, horizontal: 25.33, vertikal: 20.53

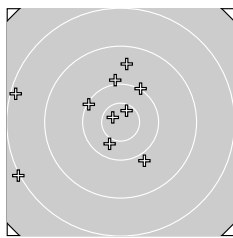
Unterschrift des Schützen

Meyton Elektronik

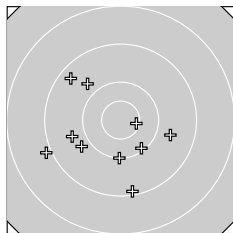
Ergebnis: **279** (293.7)
 Serien: 94 93 92
 Zähler: 13 13 4 0 0 0 0 0 0 0
 Innenzehner: 5
 weiteste: 7598 (18), 7155 (14), 5861 (6)
 beste Teiler 528.4 (1.) 602.1 (12.) 851.5 (19.)
 Trefferlage 8.05 mm links, 1.21 mm hoch
 Streuwert 25.02, horizontal: 28.15, vertikal: 21.44



Serie 1:
 10.8 * 10.3 ↗ 9.6 ↗ 10.4 * 10.3 ↘
 8.7 ↖ 9.7 → 10.4 ↖ 9.3 ↖ 9.7 →
 beste Teiler 528.4 (1.) 1507.9 (4.) 1552.6 (8.)
 Trefferlage 0.79 mm links, 8.31 mm hoch
 Streuwert 22.91, horizontal: 29.04, vertikal: 14.35



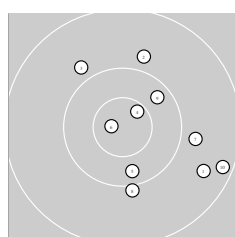
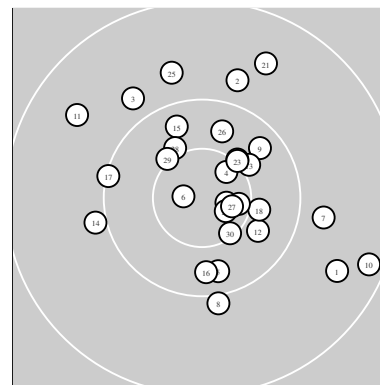
Serie 2:
 9.5 ↑ 10.7 * 10.4 ↙ 8.2 ↖ 10.0 ↗
 9.9 ↘ 10.1 ↖ 8.0 ↖ 10.6 * 9.9 ↑
 beste Teiler 602.1 (12.) 851.5 (19.) 1600.1 (13.)
 Trefferlage 13.65 mm links, 5.42 mm hoch
 Streuwert 27.37, horizontal: 30.59, vertikal: 23.72



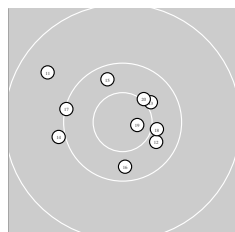
Serie 3:
 8.9 ↖ 9.2 ↓ 9.4 ↖ 10.6 * 9.8 ↖
 10.0 ↓ 10.1 ↘ 9.8 ↖ 9.7 → 9.7 ↖
 beste Teiler 1058.7 (24.) 2302.2 (27.) 2503.3 (26.)
 Trefferlage 9.71 mm links, 10.09 mm tief
 Streuwert 24.22, horizontal: 26.04, vertikal: 22.25

Unterschrift des Schützen

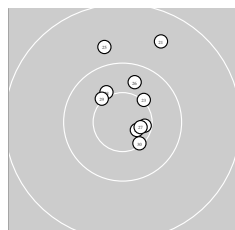
Ergebnis: **291** (306.1)
 Serien: 95 98 98
 Zähler: 21 9 0 0 0 0 0 0 0 0
 Innenzehner: 13
 weiteste: 4569 (10), 3903 (1), 3813 (11)
 beste Teiler 474.6 (6.) 631.8 (19.) 689.8 (24.)
 Trefferlage 4.28 mm rechts, 3.77 mm hoch
 Streuwert 16.24, horizontal: 16.51, vertikal: 15.97



Serie 1:
 9.5 ↘ 9.8 ↑ 9.8 ↙ 10.6 * 10.3 ↓
 10.8 * 9.8 → 10.0 ↓ 10.3 ↗ 9.2 ↘
 beste Teiler 474.6 (6.) 904.8 (4.) 1907.7 (5.)
 Trefferlage 12.36 mm rechts, 1.10 mm tief
 Streuwert 19.09, horizontal: 18.59, vertikal: 19.57



Serie 2:
 9.5 ↘ 10.4 ↘ 10.4 * 9.9 ← 10.3 ↑
 10.3 ↓ 10.1 ← 10.4 * 10.7 * 10.5 *
 beste Teiler 631.8 (19.) 1326.3 (20.) 1464.2 (13.)
 Trefferlage 3.22 mm links, 2.52 mm hoch
 Streuwert 15.48, horizontal: 18.03, vertikal: 12.40

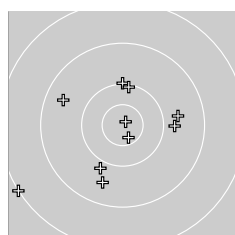
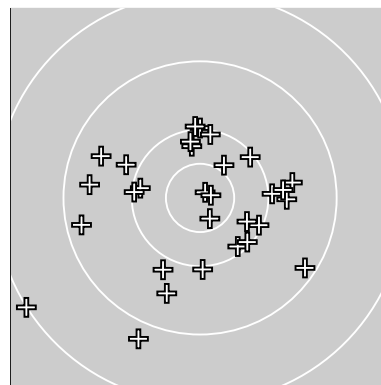


Serie 3:
 9.5 ↑ 10.6 * 10.5 * 10.7 * 9.8 ↑
 10.3 ↑ 10.7 * 10.4 * 10.5 * 10.5 *
 beste Teiler 689.8 (24.) 791.4 (27.) 948.1 (22.)
 Trefferlage 3.70 mm rechts, 9.89 mm hoch
 Streuwert 11.99, horizontal: 8.50, vertikal: 14.67

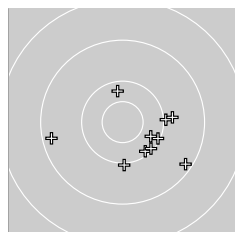
 Unterschrift des Schützen

Meyton Elektronik

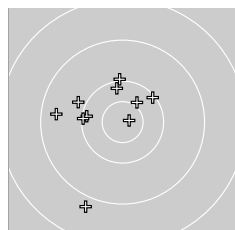
Ergebnis: **286** (297.3)
 Serien: 93 97 96
 Zähler: 18 10 2 0 0 0 0 0 0 0
 Innenzehner: 4
 weiteste: 7515 (10), 5629 (29), 4617 (11)
 beste Teiler 276.8 (2.) 408.9 (28.) 838.2 (6.)
 Trefferlage 1.38 mm links, 2.75 mm tief
 Streuwert 22.79, horizontal: 25.21, vertikal: 20.08



Serie 1:
 9.7 → 10.9 * 10.0 ↑ 9.5 ↖ 10.1 ↑
 10.6 * 9.8 → 9.9 ↙ 9.6 ↘ 8.1 ↙
 beste Teiler 276.8 (2.) 838.2 (6.) 2353.0 (5.)
 Trefferlage 5.08 mm links, 3.76 mm tief
 Streuwert 26.36, horizontal: 29.07, vertikal: 23.33



Serie 2:
 9.2 ↘ 10.1 ↘ 10.0 → 10.3 ↑ 9.8 →
 10.1 ↘ 9.3 ← 10.1 ↘ 10.0 ↓ 10.3 ↘
 beste Teiler 1917.0 (14.) 1923.0 (20.) 2252.1 (12.)
 Trefferlage 11.95 mm rechts, 9.09 mm tief
 Streuwert 19.07, horizontal: 23.11, vertikal: 13.88

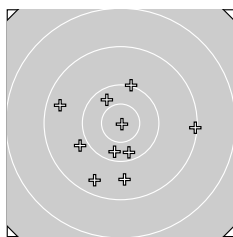
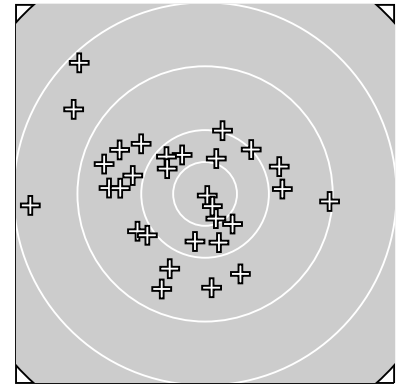


Serie 3:
 9.9 ↖ 10.4 * 10.2 ← 10.0 ↑ 10.1 ←
 10.1 ↗ 10.2 ↑ 10.8 * 8.8 ↘ 9.4 ←
 beste Teiler 408.9 (28.) 1484.3 (22.) 2090.0 (27.)
 Trefferlage 11.03 mm links, 4.58 mm hoch
 Streuwert 20.11, horizontal: 18.75, vertikal: 21.38

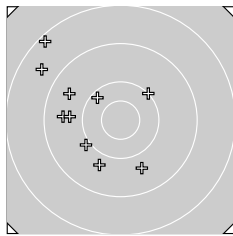
Unterschrift des Schützen

Meyton Elektronik

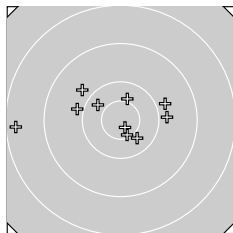
Ergebnis: **279** (294.4)
 Serien: 95 90 94
 Zähler: 12 15 3 0 0 0 0 0 0
 Innenzehner: 4
 weiteste: 7118 (15), 6860 (26), 6121 (17)
 beste Teiler 107.2 (5.) 557.8 (27.) 1055.4 (25.)
 Trefferlage 10.37 mm links, 0.52 mm hoch
 Streuwert 23.76, horizontal: 26.47, vertikal: 20.70



Serie 1:
 10.2 ↘ 9.4 ↙ 9.6 ↓ 9.1 → 10.9 *
 10.0 ↑ 10.3 ↓ 9.9 ↙ 9.4 ↖ 10.3 ↘
 beste Teiler 107.2 (5.) 1771.9 (10.) 1905.3 (7.)
 Trefferlage 3.14 mm links, 7.81 mm tief
 Streuwert 22.43, horizontal: 23.60, vertikal: 21.20



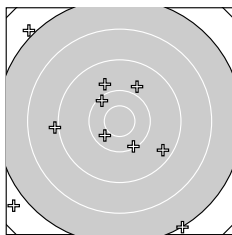
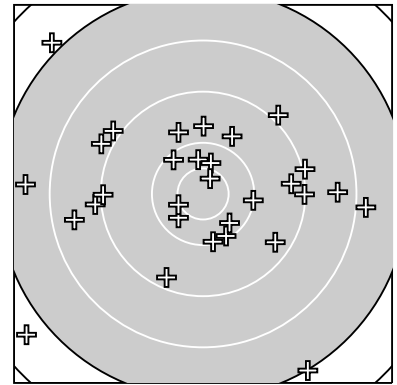
Serie 2:
 10.0 ↗ 9.7 ↘ 9.6 ← 9.8 ↙ 8.2 ↘
 9.6 ↖ 8.6 ↖ 10.2 ↘ 9.9 ↙ 9.7 ←
 beste Teiler 2102.5 (18.) 2507.8 (11.) 2781.4 (19.)
 Trefferlage 22.47 mm links, 6.14 mm hoch
 Streuwert 25.17, horizontal: 23.85, vertikal: 26.42



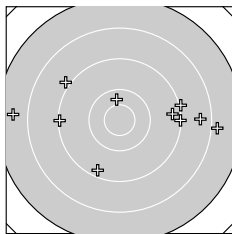
Serie 3:
 9.8 → 9.9 ← 10.3 ↖ 9.8 ↖ 10.6 *
 8.3 ← 10.7 * 10.4 ↘ 9.8 → 10.4 *
 beste Teiler 557.8 (27.) 1055.4 (25.) 1452.9 (30.)
 Trefferlage 5.50 mm links, 3.24 mm hoch
 Streuwert 22.33, horizontal: 29.73, vertikal: 10.62

Unterschrift des Schützen

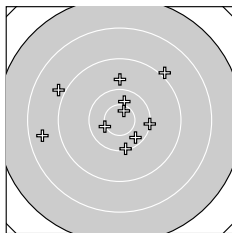
Ergebnis: **262** (275.9)
 Serien: 84 85 93
 Zähler: 10 9 6 3 2 0 0 0 0 0
 Innenzehner: 2
 weiteste: 11040 (9), 10452 (4), 10040 (1)
 beste Teiler 823.7 (30.) 1313.2 (27.) 1557.0 (26.)
 Trefferlage 2.97 mm links, 0.48 mm hoch
 Streuwert 38.69, horizontal: 44.92, vertikal: 31.25



Serie 1:
 7.0 ↘ 9.8 ↖ 10.2 ↖ 6.9 ↘ 9.4 ↘
 9.8 ↗ 10.3 ↙ 8.9 ← 6.6 ↗ 10.1 ↘
 beste Teiler 1676.0 (7.) 2202.6 (3.) 2344.5 (10.)
 Trefferlage 13.94 mm links, 6.74 mm tief
 Streuwert 46.41, horizontal: 45.27, vertikal: 47.52



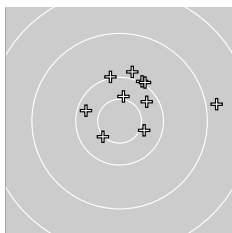
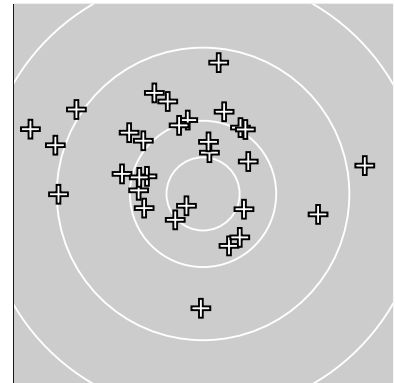
Serie 2:
 9.1 → 9.3 → 8.9 ↘ 9.0 → 8.4 →
 7.9 → 9.3 ↓ 9.1 ← 7.6 ← 10.3 ↑
 beste Teiler 1691.8 (20.) 4338.5 (12.) 4459.2 (17.)
 Trefferlage 8.80 mm rechts, 2.19 mm hoch
 Streuwert 42.14, horizontal: 56.64, vertikal: 18.52



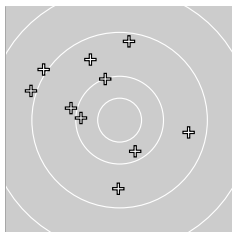
Serie 3:
 10.1 → 8.5 ← 9.7 ↑ 8.9 ↗ 10.1 ↓
 10.4 ↑ 10.5 * 8.8 ↖ 10.3 ↘ 10.7 *
 beste Teiler 823.7 (30.) 1313.2 (27.) 1557.0 (26.)
 Trefferlage 3.79 mm links, 5.99 mm hoch
 Streuwert 26.52, horizontal: 30.92, vertikal: 21.22

Unterschrift des Schützen

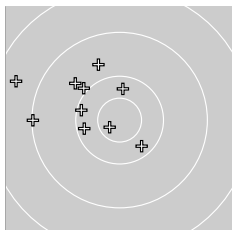
Ergebnis: **284** (295.2)
 Serien: 97 92 95
 Zähler: 17 10 3 0 0 0 0 0 0 0
 Innenzehner: 4
 weiteste: 6303 (29), 5612 (5), 5317 (17)
 beste Teiler 697.6 (21.) 1300.4 (4.) 1427.5 (10.)
 Trefferlage 7.59 mm links, 10.33 mm hoch
 Streuwert 21.98, horizontal: 25.29, vertikal: 18.06



Serie 1:
 10.2 ↙ 10.0 ↑ 10.0 ↗ 10.5 * 8.8 →
 9.9 ↑ 10.0 ↗ 10.4 * 10.3 ↗ 10.4 *
 beste Teiler 1300.4 (4.) 1427.5 (10.) 1492.2 (8.)
 Trefferlage 8.73 mm rechts, 12.48 mm hoch
 Streuwert 16.78, horizontal: 20.11, vertikal: 12.58



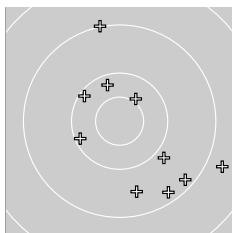
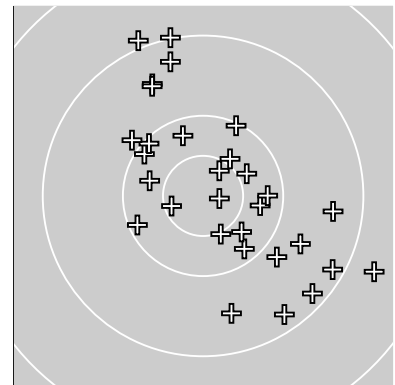
Serie 2:
 10.2 ← 9.3 ↑ 10.1 ↖ 9.9 ← 9.5 ↖
 9.5 ↓ 8.9 ← 10.2 ↓ 9.0 ↙ 9.5 →
 beste Teiler 1984.7 (18.) 2206.4 (11.) 2483.2 (13.)
 Trefferlage 11.56 mm links, 9.26 mm hoch
 Streuwert 26.13, horizontal: 26.54, vertikal: 25.71



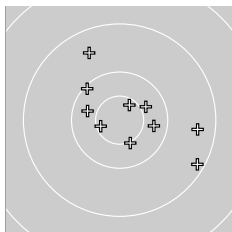
Serie 3:
 10.7 * 10.3 ↑ 9.7 ↘ 9.1 ← 10.1 ↖
 10.0 ↘ 9.7 ↖ 10.2 ← 8.5 ↙ 10.3 ↘
 beste Teiler 697.6 (21.) 1789.5 (22.) 1943.6 (30.)
 Trefferlage 19.95 mm links, 9.24 mm hoch
 Streuwert 18.61, horizontal: 21.66, vertikal: 14.95

Unterschrift des Schützen

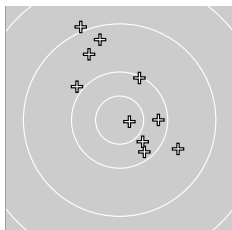
Ergebnis: **285** (296.6)
 Serien: 93 97 95
 Zähler: 16 13 1 0 0 0 0 0 0
 Innenzehner: 6
 weiteste: 5835 (10), 5246 (26), 5038 (2)
 beste Teiler 514.4 (30.) 933.1 (16.) 1032.2 (19.)
 Trefferlage 6.13 mm rechts, 2.73 mm hoch
 Streuwert 22.50, horizontal: 21.07, vertikal: 23.86



Serie 1:
 10.1 ↘ 9.0 ↑ 9.6 ↓ 9.9 ↘ 10.1 ←
 9.3 ↘ 10.4 * 10.2 ↑ 9.2 ↘ 8.7 ↘
 beste Teiler 1428.7 (7.) 1979.2 (8.) 2239.4 (5.)
 Trefferlage 9.78 mm rechts, 6.30 mm tief
 Streuwert 26.46, horizontal: 24.20, vertikal: 28.55



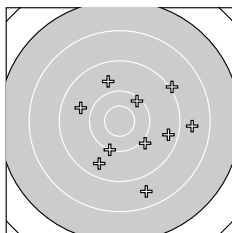
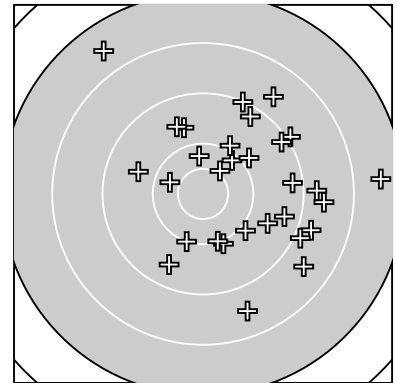
Serie 2:
 10.4 * 10.3 ← 9.2 ↘ 10.1 ↘ 10.5 *
 10.6 * 10.3 → 9.4 → 10.6 * 9.5 ↖
 beste Teiler 933.1 (16.) 1032.2 (19.) 1312.2 (15.)
 Trefferlage 6.37 mm rechts, 2.49 mm hoch
 Streuwert 19.16, horizontal: 21.95, vertikal: 15.87



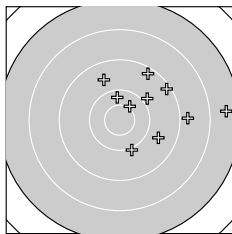
Serie 3:
 10.2 → 10.1 ↗ 9.7 ↘ 10.2 ↘ 10.4 ↘
 9.0 ↖ 9.9 ↖ 9.3 ↑ 9.6 ↖ 10.8 *
 beste Teiler 514.4 (30.) 1644.9 (25.) 2015.0 (21.)
 Trefferlage 2.23 mm rechts, 12.02 mm hoch
 Streuwert 21.34, horizontal: 18.18, vertikal: 24.09

Unterschrift des Schützen

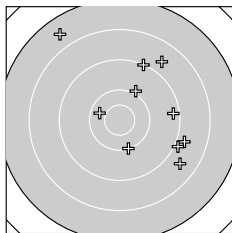
Ergebnis: **267** (280.8)
 Serien: 90 90 87
 Zähler: 8 13 7 2 0 0 0 0 0 0
 Innenzehner: 1
 weiteste: 8869 (15), 8654 (30), 6229 (3)
 beste Teiler 1417.2 (17.) 1746.4 (22.) 1891.9 (11.)
 Trefferlage 20.23 mm rechts, 5.14 mm hoch
 Streuwert 29.83, horizontal: 30.36, vertikal: 29.30



Serie 1:
 9.5 ↙ 9.9 ↘ 8.6 ↓ 9.7 ↖ 9.0 ↗
 9.7 ↑ 8.7 → 10.0 ↓ 10.2 ↗ 9.4 →
 beste Teiler 2204.2 (9.) 2508.1 (8.) 2791.0 (2.)
 Trefferlage 13.48 mm rechts, 6.17 mm tief
 Streuwert 29.35, horizontal: 29.69, vertikal: 29.01



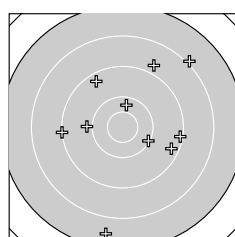
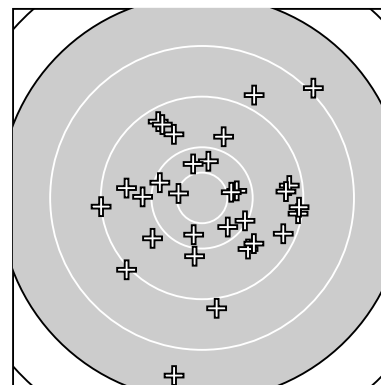
Serie 2:
 10.3 ↑ 10.0 ↓ 9.9 ↗ 9.7 ↘ 7.5 →
 9.6 ↖ 10.4 * 8.8 → 9.2 ↗ 9.3 ↗
 beste Teiler 1417.2 (17.) 1891.9 (11.) 2675.7 (12.)
 Trefferlage 26.59 mm rechts, 11.54 mm hoch
 Streuwert 25.31, horizontal: 29.65, vertikal: 20.05



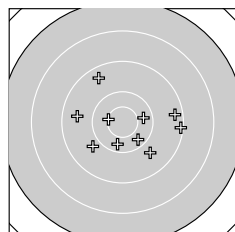
Serie 3:
 9.1 ↗ 10.3 ↖ 8.8 ↘ 9.3 → 10.0 ↗
 10.1 ↓ 8.9 ↘ 8.6 ↘ 8.7 ↗ 7.6 ↖
 beste Teiler 1746.4 (22.) 2465.8 (26.) 2748.3 (25.)
 Trefferlage 20.62 mm rechts, 10.05 mm hoch
 Streuwert 34.79, horizontal: 33.37, vertikal: 36.16

Unterschrift des Schützen

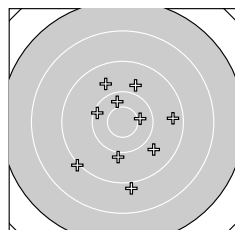
Ergebnis: **274** (287.0)
 Serien: 88 94 92
 Zähler: 9 17 3 1 0 0 0 0 0 0
 Innenzehner: 2
 weiteste: 8879 (10), 7716 (4), 5689 (2)
 beste Teiler 1184.6 (15.) 1467.1 (26.) 1733.3 (24.)
 Trefferlage 4.76 mm rechts, 1.55 mm tief
 Streuwert 29.34, horizontal: 28.62, vertikal: 30.06



Serie 1:
 9.9 ← 8.8 ↗ 10.3 ↑ 8.0 ↘ 9.3 ↖
 9.3 ↘ 9.1 ← 9.1 → 10.1 ↘ 7.5 ↓
 beste Teiler 1835.5 (3.) 2401.9 (9.) 2936.4 (1.)
 Trefferlage 7.77 mm rechts, 3.24 mm hoch
 Streuwert 38.56, horizontal: 35.58, vertikal: 41.32



Serie 2:
 9.6 ← 9.3 → 9.1 → 10.3 ↓ 10.5 *
 9.8 ↙ 9.7 ↘ 10.3 ↘ 10.3 → 9.4 ↖
 beste Teiler 1184.6 (15.) 1747.9 (19.) 1861.8 (14.)
 Trefferlage 4.62 mm rechts, 2.94 mm tief
 Streuwert 23.95, horizontal: 28.73, vertikal: 17.93

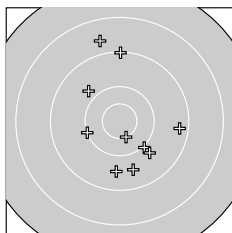
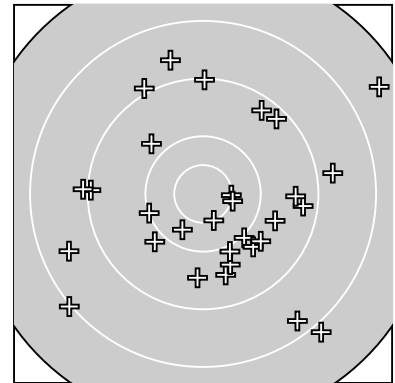


Serie 3:
 9.0 ↙ 9.7 ↖ 10.2 ↖ 10.3 ↑ 9.8 ↗
 10.4 * 8.9 ↓ 9.9 ↓ 9.7 ↘ 9.4 →
 beste Teiler 1467.1 (26.) 1733.3 (24.) 2216.8 (23.)
 Trefferlage 1.90 mm rechts, 4.95 mm tief
 Streuwert 26.17, horizontal: 22.98, vertikal: 29.01

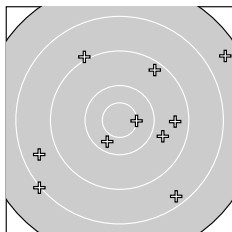
Unterschrift des Schützen

Meyton Elektronik

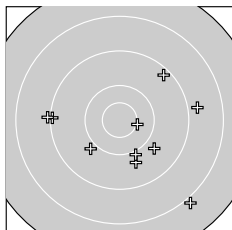
Ergebnis: **268** (281.0)
 Serien: 92 87 89
 Zähler: 7 16 5 2 0 0 0 0 0 0
 Innenzehner: 3
 weiteste: 8934 (16), 7881 (21), 7580 (13)
 beste Teiler 1226.1 (17.) 1240.4 (5.) 1320.8 (30.)
 Trefferlage 6.34 mm rechts, 5.11 mm tief
 Streuwert 32.92, horizontal: 34.52, vertikal: 31.23



Serie 1:
 10.0 ↘ 10.1 ← 9.8 ↘ 9.1 ↑ 10.5 *
 9.6 ↓ 9.3 → 9.6 ↓ 8.7 ↑ 9.8 ↘
 beste Teiler 1240.4 (5.) 2479.4 (2.) 2608.6 (1.)
 Trefferlage 3.57 mm rechts, 0.93 mm tief
 Streuwert 27.74, horizontal: 20.85, vertikal: 33.23



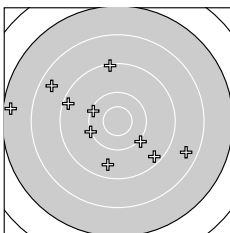
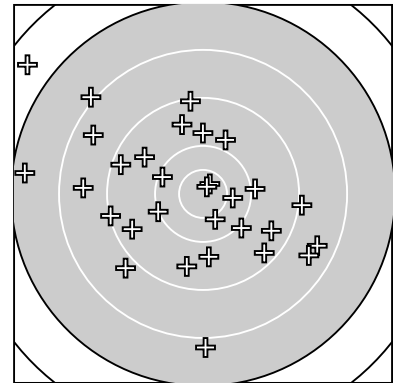
Serie 2:
 8.5 ← 10.3 ↙ 8.0 ↙ 9.5 → 9.7 →
 7.5 ↗ 10.5 * 8.3 ↘ 9.0 ↘ 9.3 ↗
 beste Teiler 1226.1 (17.) 1792.0 (12.) 3333.9 (15.)
 Trefferlage 7.56 mm rechts, 2.91 mm tief
 Streuwert 40.59, horizontal: 44.45, vertikal: 36.33



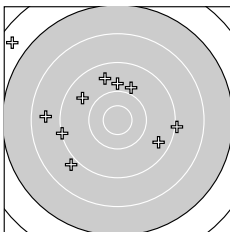
Serie 3:
 7.9 ↘ 9.1 ← 9.0 ← 8.8 → 9.2 ↗
 9.9 ↙ 9.7 ↓ 10.0 ↓ 9.8 ↘ 10.5 *
 beste Teiler 1320.8 (30.) 2755.8 (28.) 2947.2 (26.)
 Trefferlage 7.89 mm rechts, 11.47 mm tief
 Streuwert 32.14, horizontal: 37.64, vertikal: 25.48

Unterschrift des Schützen

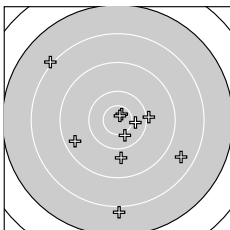
Ergebnis: **265** (277.5)
 Serien: 89 85 91
 Zähler: 8 13 6 2 1 0 0 0 0 0
 Innenzehner: 3
 weiteste: 11349 (19), 9344 (10), 7998 (25)
 beste Teiler 418.2 (30.) 626.8 (26.) 1467.1 (28.)
 Trefferlage 10.25 mm links, 0.50 mm tief
 Streuwert 36.09, horizontal: 40.15, vertikal: 31.52



Serie 1:
 10.0 ↘ 9.2 ↖ 9.3 ↘ 9.1 ↑ 8.5 ↖
 10.0 ← 8.5 ↘ 10.1 ↖ 9.5 ↓ 7.3 ←
 beste Teiler 2290.0 (8.) 2513.7 (6.) 2670.2 (1.)
 Trefferlage 14.11 mm links, 0.87 mm tief
 Streuwert 37.24, horizontal: 44.45, vertikal: 28.26



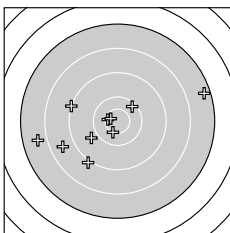
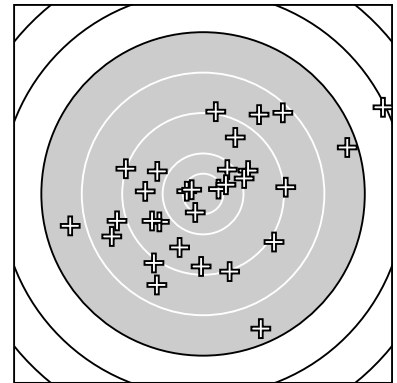
Serie 2:
 8.8 ↙ 9.8 ↗ 9.8 ↑ 9.0 → 9.6 ↖
 8.6 ← 9.6 ↗ 9.1 ← 6.5 ↖ 9.4 ↘
 beste Teiler 3044.7 (12.) 3170.0 (13.) 3596.5 (15.)
 Trefferlage 18.50 mm links, 11.02 mm hoch
 Streuwert 38.50, horizontal: 44.56, vertikal: 31.29



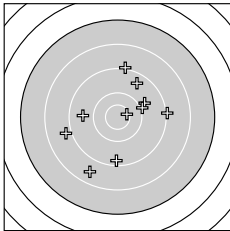
Serie 3:
 9.4 ← 8.5 ↘ 8.0 ↖ 10.4 → 7.9 ↓
 10.7 * 10.0 → 10.4 * 9.7 ↓ 10.8 *
 beste Teiler 418.2 (30.) 626.8 (26.) 1467.1 (28.)
 Trefferlage 1.84 mm rechts, 11.66 mm tief
 Streuwert 32.53, horizontal: 31.29, vertikal: 33.72

Unterschrift des Schützen

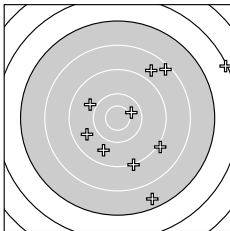
Ergebnis: **262** (275.3)
 Serien: 89 90 83
 Zähler: 7 13 6 3 1 0 0 0 0 0
 Innenzehner: 5
 weiteste: 12347 (30), 9366 (4), 9061 (29)
 beste Teiler 750.1 (3.) 998.5 (18.) 1022.7 (1.)
 Trefferlage 3.07 mm rechts, 3.05 mm tief
 Streuwert 38.64, horizontal: 42.80, vertikal: 33.97



Serie 1:
 10.6 * 10.2 ↗ 10.7 * 7.3 → 10.5 *
 9.8 ↙ 8.6 ← 9.1 ← 7.7 ← 9.0 ↙
 beste Teiler 750.1 (3.) 1022.7 (1.) 1243.6 (5.)
 Trefferlage 16.15 mm links, 5.39 mm tief
 Streuwert 36.48, horizontal: 46.67, vertikal: 21.97



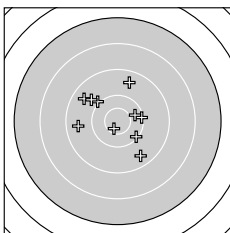
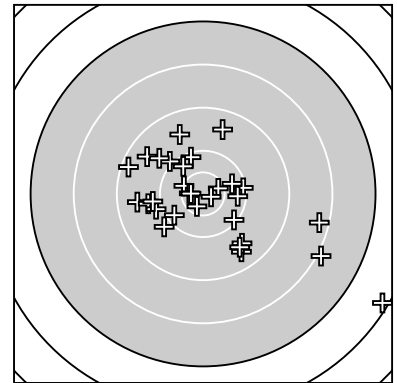
Serie 2:
 9.0 ↑ 9.3 ↓ 9.8 ↗ 9.5 ↗ 8.5 ↙
 8.8 ← 9.6 ← 10.6 * 9.0 → 10.0 →
 beste Teiler 998.5 (18.) 2713.0 (20.) 3135.2 (13.)
 Trefferlage 2.29 mm rechts, 0.06 mm hoch
 Streuwert 32.53, horizontal: 32.41, vertikal: 32.65



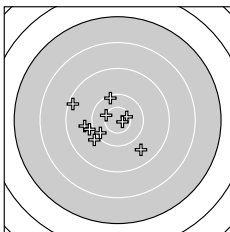
Serie 3:
 9.0 ↓ 9.6 ↙ 9.6 ← 9.8 ↖ 8.2 ↗
 10.4 * 8.7 ↗ 8.9 ↘ 7.4 ↓ 6.1 →
 beste Teiler 1522.8 (26.) 3155.1 (24.) 3571.0 (23.)
 Trefferlage 23.09 mm rechts, 3.84 mm tief
 Streuwert 44.55, horizontal: 42.63, vertikal: 46.39

Unterschrift des Schützen

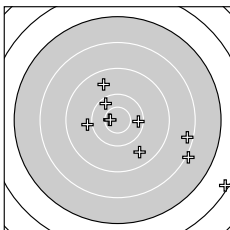
Ergebnis: **279** (293.0)
 Serien: 95 95 89
 Zähler: 14 13 2 0 1 0 0 0 0 0
 Innenzehner: 6
 weiteste: 12171 (21), 7729 (29), 6941 (27)
 beste Teiler 492.1 (16.) 702.2 (24.) 798.7 (23.)
 Trefferlage 2.03 mm rechts, 2.85 mm tief
 Streuwert 28.34, horizontal: 33.50, vertikal: 22.00



Serie 1:
 9.5 ↘ 10.1 → 10.3 → 10.0 ↘ 9.5 ←
 9.5 ↘ 10.7 * 10.1 ↘ 9.5 ↑ 9.8 ↘
 beste Teiler 804.9 (7.) 1778.3 (3.) 2342.9 (8.)
 Trefferlage 2.71 mm links, 4.72 mm hoch
 Streuwert 22.51, horizontal: 24.10, vertikal: 20.80



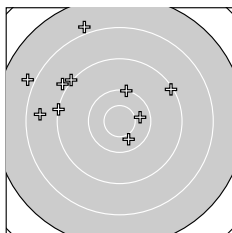
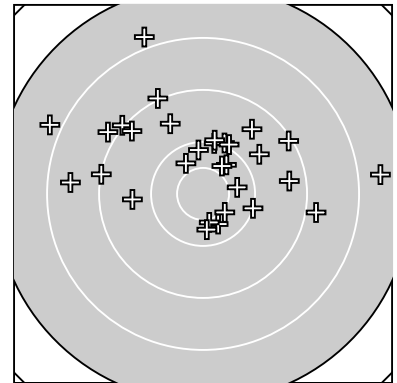
Serie 2:
 9.6 ↘ 9.8 ← 10.2 ↙ 10.1 ↑ 10.6 *
 10.8 * 9.2 ↘ 9.9 ↙ 9.9 ← 10.5 *
 beste Teiler 492.1 (16.) 939.1 (15.) 1204.6 (20.)
 Trefferlage 12.36 mm links, 3.14 mm tief
 Streuwert 17.86, horizontal: 20.18, vertikal: 15.20



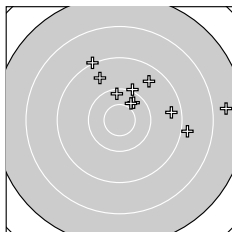
Serie 3:
 6.2 ↘ 9.6 ↘ 10.7 * 10.7 * 9.6 ↑
 9.9 ← 8.3 → 10.2 → 8.0 ↘ 10.2 ↘
 beste Teiler 702.2 (24.) 798.7 (23.) 1971.8 (30.)
 Trefferlage 21.19 mm rechts, 10.14 mm tief
 Streuwert 37.00, horizontal: 44.32, vertikal: 27.81

Unterschrift des Schützen

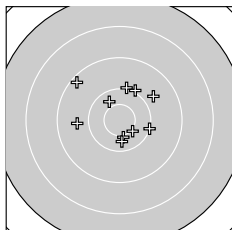
Ergebnis: **275** (286.1)
 Serien: 87 91 97
 Zähler: 14 10 3 3 0 0 0 0 0 0
 Innenzehner: 2
 weiteste: 8577 (18), 8079 (2), 8053 (10)
 beste Teiler 1370.5 (27.) 1400.8 (29.) 1618.3 (19.)
 Trefferlage 0.85 mm links, 15.97 mm hoch
 Streuwert 28.68, horizontal: 35.16, vertikal: 20.22



Serie 1:
 9.1 ← 7.8 ↖ 8.5 ← 8.9 ↘ 10.3 →
 10.1 ↑ 10.4 ↘ 9.0 ↘ 9.1 ↗ 7.8 ↖
 beste Teiler 1618.4 (7.) 1669.9 (5.) 2487.4 (6.)
 Trefferlage 22.90 mm links, 22.46 mm hoch
 Streuwert 31.95, horizontal: 38.13, vertikal: 24.25



Serie 2:
 10.2 ↑ 10.0 ↗ 9.0 ↖ 9.6 ↖ 9.5 ↗
 9.4 → 10.3 ↗ 7.6 → 10.4 ↗ 8.9 →
 beste Teiler 1618.3 (19.) 1793.3 (17.) 2122.6 (11.)
 Trefferlage 19.53 mm rechts, 19.03 mm hoch
 Streuwert 25.75, horizontal: 32.86, vertikal: 15.69



Serie 3:
 10.3 ↖ 9.2 ↖ 9.7 ↗ 10.1 → 10.0 ↑
 9.7 ← 10.5 * 10.0 ↑ 10.4 * 10.3 ↓
 beste Teiler 1370.5 (27.) 1400.8 (29.) 1684.8 (21.)
 Trefferlage 0.79 mm rechts, 6.41 mm hoch
 Streuwert 19.62, horizontal: 21.09, vertikal: 18.03

Unterschrift des Schützen

KK 100m 30 – Wertung – Herren I

StartNr: 146

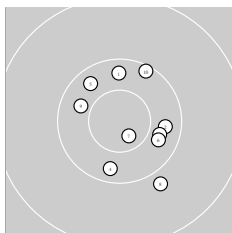
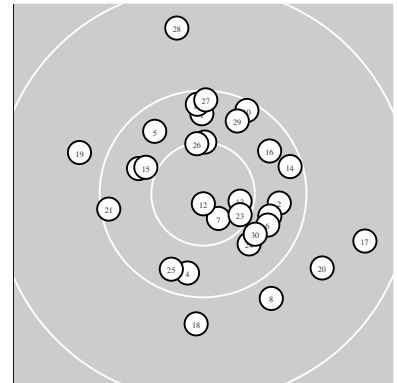
StandNr: 110

19. März 2023 12:50

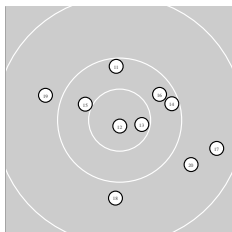
Trunk, Patrick #143

5600 SV Kamen / SV Kamen

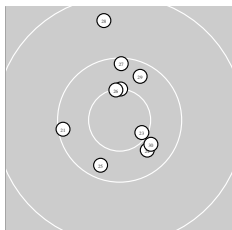
Ergebnis: **294** (306.4)
 Serien: 99 96 99
 Zähler: 24 6 0 0 0 0 0 0 0 0
 Innenzehner: 7
 weiteste: 4074 (17), 4058 (28), 3390 (20)
 beste Teiler 239.1 (12.) 700.0 (7.) 911.1 (13.)
 Trefferlage 4.02 mm rechts, 1.40 mm hoch
 Streuwert 15.60, horizontal: 14.89, vertikal: 16.27



Serie 1:
 10.3 ↑ 10.3 → 10.3 ↘ 10.2 ↓ 10.3 ↖
 10.3 ↘ 10.7 * 9.9 ↘ 10.3 ↖ 10.1 ↗
 beste Teiler 700.0 (7.) 1675.1 (9.) 1699.4 (3.)
 Trefferlage 4.96 mm rechts, 0.45 mm tief
 Streuwert 14.07, horizontal: 12.42, vertikal: 15.55



Serie 2:
 10.2 ↑ 10.9 * 10.6 * 10.2 → 10.4 *
 10.3 ↗ 9.4 → 9.8 ↓ 9.8 ↖ 9.7 ↘
 beste Teiler 239.1 (12.) 911.1 (13.) 1525.1 (15.)
 Trefferlage 6.73 mm rechts, 0.97 mm tief
 Streuwert 18.22, horizontal: 20.48, vertikal: 15.63

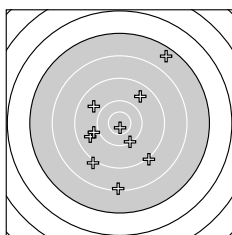
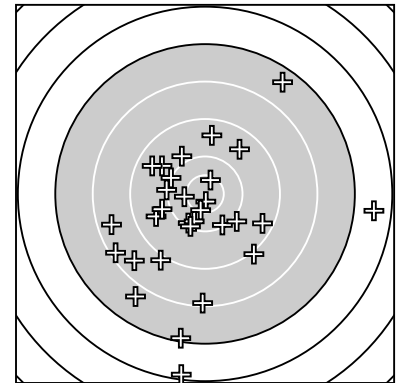


Serie 3:
 10.1 ← 10.5 * 10.6 * 10.4 ↘ 10.2 ↓
 10.5 * 10.1 ↑ 9.4 ↑ 10.2 ↗ 10.4 ↘
 beste Teiler 1027.0 (23.) 1222.3 (26.) 1253.6 (22.)
 Trefferlage 0.37 mm rechts, 5.64 mm hoch
 Streuwert 15.06, horizontal: 10.81, vertikal: 18.35

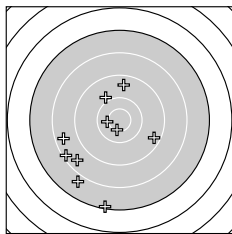
Unterschrift des Schützen

Meyton Elektronik

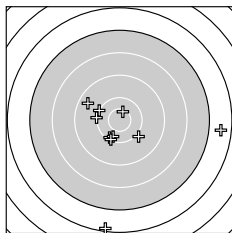
Ergebnis: **263** (275.8)
 Serien: 88 85 90
 Zähler: 10 10 5 3 2 0 0 0 0 0
 Innenzehner: 4
 weiteste: 12167 (25), 11330 (23), 9767 (14)
 beste Teiler 514.4 (1.) 993.5 (22.) 1122.1 (11.)
 Trefferlage 7.12 mm links, 16.36 mm tief
 Streuwert 37.70, horizontal: 35.55, vertikal: 39.73



Serie 1:
 10.8 * 9.6 ← 8.9 ↙ 9.0 ↘ 7.4 ↗
 9.6 ↗ 8.1 ↓ 9.8 ← 9.7 ↖ 10.1 ↘
 beste Teiler 514.4 (1.) 2372.6 (10.) 3047.7 (8.)
 Trefferlage 0.20 mm links, 8.52 mm tief
 Streuwert 36.32, horizontal: 29.83, vertikal: 41.82



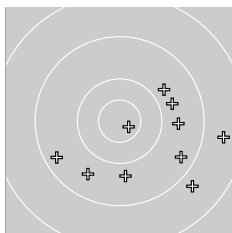
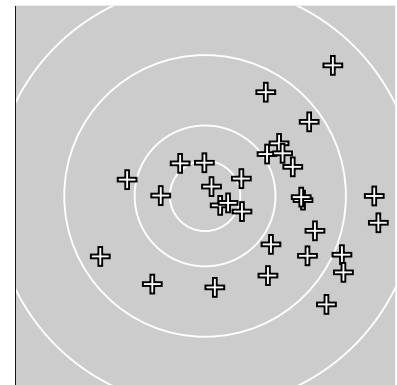
Serie 2:
 10.5 * 9.5 ↑ 8.4 ← 7.2 ↓ 10.4 *
 9.9 ↘ 9.3 ↘ 8.2 ↙ 7.8 ↙ 8.5 ↙
 beste Teiler 1122.1 (11.) 1394.4 (15.) 2957.3 (16.)
 Trefferlage 22.14 mm links, 23.71 mm tief
 Streuwert 36.60, horizontal: 31.88, vertikal: 40.77



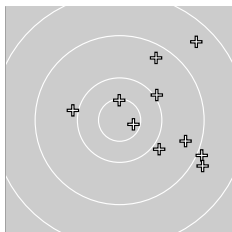
Serie 3:
 10.0 ↖ 10.6 * 6.5 → 10.1 ↙ 6.2 ↓
 10.0 ← 10.2 ↓ 10.1 ↓ 9.5 ↖ 9.9 ↘
 beste Teiler 993.5 (22.) 1972.2 (27.) 2244.9 (24.)
 Trefferlage 0.96 mm rechts, 16.83 mm tief
 Streuwert 40.85, horizontal: 42.31, vertikal: 39.33

Unterschrift des Schützen

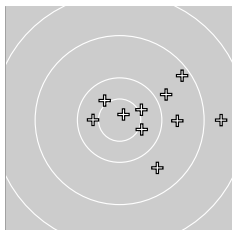
Ergebnis: **273** (290.8)
 Serien: 89 90 94
 Zähler: 9 15 6 0 0 0 0 0 0 0
 Innenzehner: 7
 weiteste: 6485 (14), 6225 (4), 6006 (26)
 beste Teiler 402.7 (25.) 632.6 (6.) 852.8 (15.)
 Trefferlage 19.99 mm rechts, 2.21 mm tief
 Streuwert 22.99, horizontal: 25.16, vertikal: 20.60



Serie 1:
 9.4 ↘ 9.8 ↗ 9.8 → 8.6 → 9.6 ↙
 10.7 * 8.8 ↘ 9.3 ↖ 9.8 ↓ 9.7 →
 beste Teiler 632.6 (6.) 3222.8 (2.) 3266.3 (9.)
 Trefferlage 18.59 mm rechts, 13.04 mm tief
 Streuwert 25.21, horizontal: 30.09, vertikal: 19.12



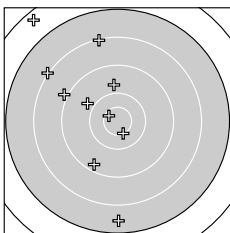
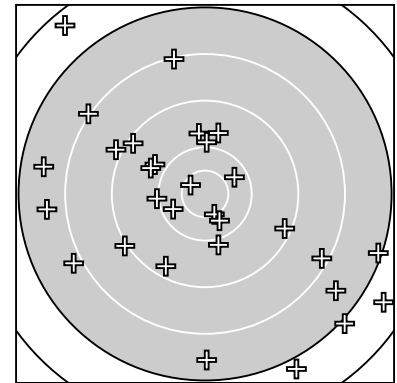
Serie 2:
 9.4 → 8.9 → 10.0 ↗ 8.5 ↗ 10.6 *
 10.5 * 8.8 ↘ 9.9 ← 9.4 ↗ 9.9 ↘
 beste Teiler 852.8 (15.) 1178.2 (16.) 2654.8 (13.)
 Trefferlage 22.92 mm rechts, 3.55 mm hoch
 Streuwert 24.52, horizontal: 24.55, vertikal: 24.49



Serie 3:
 9.6 ↘ 10.4 * 10.4 ← 9.7 → 10.8 *
 8.7 → 10.4 * 9.2 ↗ 10.4 * 9.8 ↗
 beste Teiler 402.7 (25.) 1421.7 (29.) 1427.2 (27.)
 Trefferlage 18.46 mm rechts, 2.83 mm hoch
 Streuwert 19.01, horizontal: 22.74, vertikal: 14.35

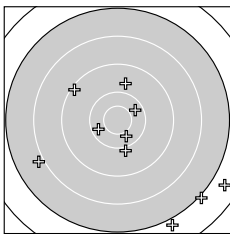
Unterschrift des Schützen

Ergebnis: **250** (263.2)
 Serien: 84 83 83
 Zähler: 7 9 4 7 3 0 0 0 0 0
 Innenzehner: 2
 weiteste: 11743 (4), 11197 (18), 10586 (15)
 beste Teiler 912.9 (8.) 1203.9 (9.) 1629.0 (20.)
 Trefferlage 4.14 mm links, 7.19 mm tief
 Streuwert 47.00, horizontal: 50.68, vertikal: 43.02



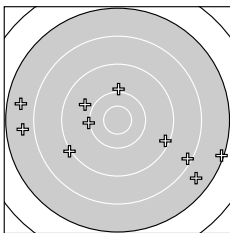
Serie 1:
 9.8 ↘ 8.1 ↑ 8.9 ↘ 6.4 ↘ 9.8 ↑
 9.3 ↙ 7.5 ↓ 10.6 * 10.5 * 8.0 ↖

beste Teiler 912.9 (8.) 1203.9 (9.) 3114.2 (1.)
 Trefferlage 25.52 mm links, 14.33 mm hoch
 Streuwert 41.80, horizontal: 27.60, vertikal: 52.28



Serie 2:
 9.9 ↓ 9.7 ↑ 7.0 ↘ 9.2 ↘ 6.8 ↓
 10.3 ↗ 10.3 ← 6.6 ↘ 7.9 ← 10.4 ↓

beste Teiler 1629.0 (20.) 1808.8 (16.) 1895.6 (17.)
 Trefferlage 13.11 mm rechts, 23.97 mm tief
 Streuwert 46.04, horizontal: 50.11, vertikal: 41.57

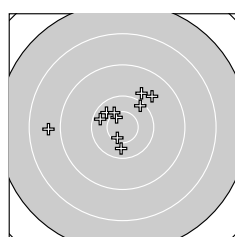
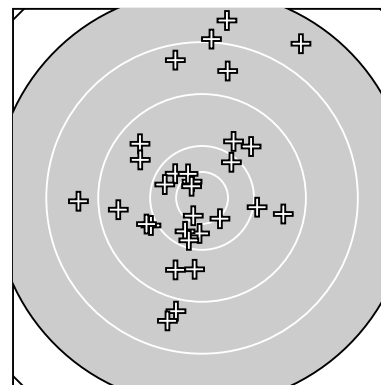


Serie 3:
 8.2 ↘ 10.0 ← 9.0 ← 7.6 ↘ 7.6 ←
 7.1 → 9.8 ↖ 7.7 ← 10.0 ↑ 9.2 →

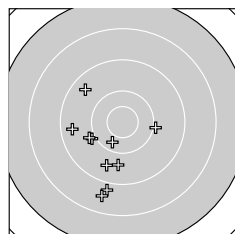
beste Teiler 2593.5 (22.) 2768.3 (29.) 3223.6 (27.)
 Trefferlage 0.01 mm links, 11.93 mm tief
 Streuwert 48.96, horizontal: 64.39, vertikal: 25.46

Unterschrift des Schützen

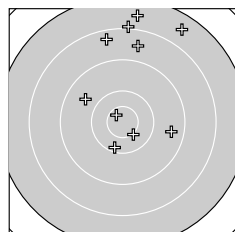
Ergebnis: **272** (287.4)
 Serien: 96 90 86
 Zähler: 12 10 6 2 0 0 0 0 0 0
 Innenzehner: 5
 weiteste: 8819 (26), 8625 (24), 7660 (25)
 beste Teiler 754.1 (21.) 921.6 (2.) 956.1 (6.)
 Trefferlage 4.44 mm links, 7.33 mm hoch
 Streuwert 30.44, horizontal: 22.77, vertikal: 36.53



Serie 1:
 10.3 ↘ 10.6 * 9.8 ↗ 8.7 ← 10.5 *
 10.6 * 10.3 ↘ 10.2 ↗ 9.7 ↗ 10.3 ↓
 beste Teiler 921.6 (2.) 956.1 (6.) 1339.0 (5.)
 Trefferlage 5.45 mm links, 7.93 mm hoch
 Streuwert 19.10, horizontal: 23.12, vertikal: 13.98



Serie 2:
 9.5 ↘ 9.4 ← 8.8 ↓ 8.6 ↓ 9.6 ↓
 9.7 ↓ 9.9 ← 9.9 ← 10.0 → 10.3 ↓
 beste Teiler 1806.3 (20.) 2688.4 (19.) 2795.4 (17.)
 Trefferlage 14.88 mm links, 20.87 mm tief
 Streuwert 22.15, horizontal: 18.28, vertikal: 25.44

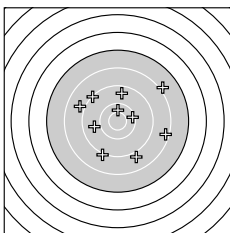
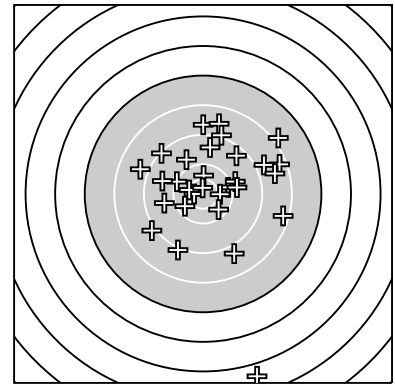


Serie 3:
 10.7 * 10.2 ↓ 8.4 ↑ 7.6 ↑ 8.0 ↑
 7.5 ↗ 8.6 ↑ 9.7 ↘ 9.5 → 10.5 *
 beste Teiler 754.1 (21.) 1320.3 (30.) 2138.7 (22.)
 Trefferlage 7.01 mm rechts, 34.93 mm hoch
 Streuwert 33.62, horizontal: 23.12, vertikal: 41.54

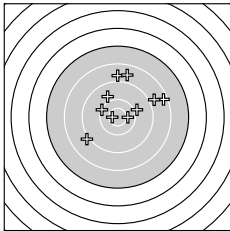
Unterschrift des Schützen

Meyton Elektronik

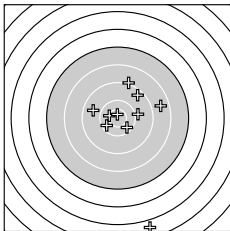
Ergebnis: **263** (278.7)
 Serien: 87 88 88
 Zähler: 9 10 9 1 0 0 1 0 0 0
 Innenzehner: 4
 weiteste: 16070 (23), 7924 (1), 7018 (3)
 beste Teiler 515.3 (28.) 754.0 (12.) 1218.6 (22.)
 Trefferlage 8.58 mm rechts, 5.68 mm hoch
 Streuwert 37.40, horizontal: 33.78, vertikal: 40.71



Serie 1:
 7.9 ↗ 9.0 ↘ 8.3 → 10.2 → 8.8 ↖
 9.5 ↑ 9.1 ↙ 10.4 ↑ 9.7 ← 8.8 ↘
 beste Teiler 1551.6 (8.) 2192.1 (4.) 3361.3 (9.)
 Trefferlage 4.30 mm rechts, 3.86 mm hoch
 Streuwert 37.92, horizontal: 41.07, vertikal: 34.49



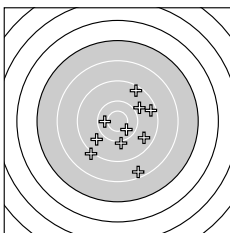
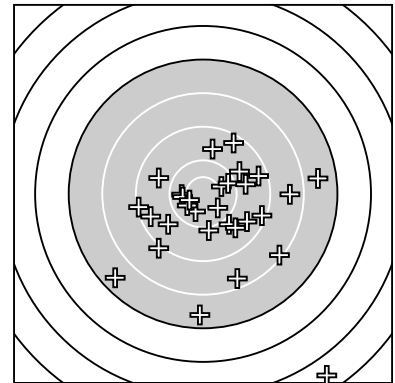
Serie 2:
 8.3 → 10.7 * 10.4 * 8.7 ↑ 8.6 ↑
 9.9 → 8.9 ↙ 9.8 ↘ 8.8 → 10.1 ↖
 beste Teiler 754.0 (12.) 1439.2 (13.) 2445.3 (20.)
 Trefferlage 8.44 mm rechts, 18.56 mm hoch
 Streuwert 30.35, horizontal: 33.10, vertikal: 27.33



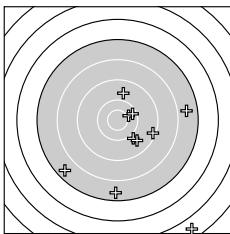
Serie 3:
 10.3 ↘ 10.5 * 4.6 ↓ 9.9 → 8.5 →
 9.0 ↑ 10.3 ↙ 10.8 * 9.3 ↗ 9.6 ↖
 beste Teiler 515.3 (28.) 1218.6 (22.) 1850.7 (27.)
 Trefferlage 13.00 mm rechts, 5.37 mm tief
 Streuwert 44.34, horizontal: 29.18, vertikal: 55.50

Unterschrift des Schützen

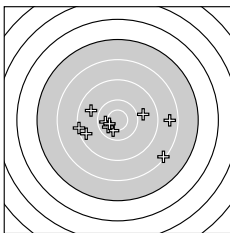
Ergebnis: **265** (278.2)
 Serien: 92 81 92
 Zähler: 9 14 3 3 0 0 1 0 0 0
 Innenzehner: 5
 weiteste: 16349 (19), 9041 (11), 9012 (14)
 beste Teiler 1112.6 (30.) 1423.3 (26.) 1459.8 (29.)
 Trefferlage 10.55 mm rechts, 16.40 mm tief
 Streuwert 36.67, horizontal: 37.53, vertikal: 35.78



Serie 1:
 9.3 ↗ 9.0 ↘ 10.0 ↓ 9.7 ↙ 10.4 *
 9.8 ↘ 8.3 ↓ 10.4 ← 9.3 → 9.5 ↘
 beste Teiler 1508.7 (5.) 1593.7 (8.) 2756.2 (3.)
 Trefferlage 8.96 mm rechts, 11.68 mm tief
 Streuwert 27.83, horizontal: 25.89, vertikal: 29.65



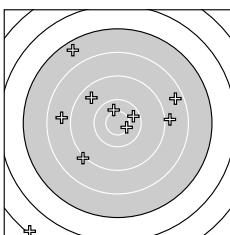
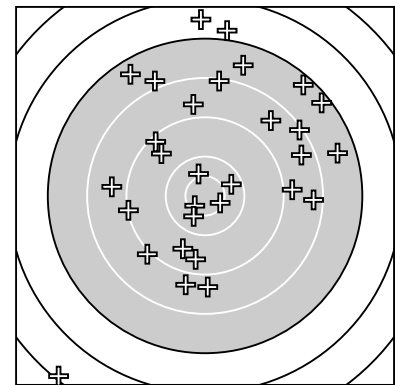
Serie 2:
 7.4 ↙ 9.7 ↑ 10.4 * 7.5 ↓ 10.2 →
 9.2 → 9.9 ↘ 7.6 → 4.5 ↘ 9.7 ↘
 beste Teiler 1469.7 (13.) 2023.4 (15.) 2974.5 (17.)
 Trefferlage 23.63 mm rechts, 29.32 mm tief
 Streuwert 48.51, horizontal: 44.66, vertikal: 52.08



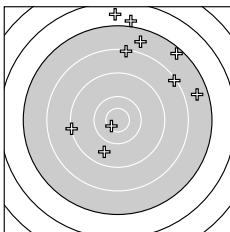
Serie 3:
 9.8 → 9.4 ← 8.1 ↘ 9.1 ← 10.4 ←
 10.4 * 8.5 → 9.7 ← 10.4 * 10.6 *
 beste Teiler 1112.6 (30.) 1423.3 (26.) 1459.8 (29.)
 Trefferlage 0.94 mm links, 8.21 mm tief
 Streuwert 29.87, horizontal: 39.18, vertikal: 15.79

Unterschrift des Schützen

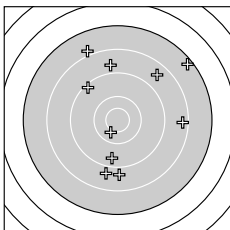
Ergebnis: **243** (256.8)
 Serien: 84 77 82
 Zähler: 5 6 10 6 2 1 0 0 0 0
 Innenzehner: 4
 weiteste: 14765 (10), 11216 (15), 10600 (16)
 beste Teiler 903.2 (14.) 1056.3 (2.) 1456.3 (3.)
 Trefferlage 4.88 mm rechts, 19.05 mm hoch
 Streuwert 48.31, horizontal: 43.73, vertikal: 52.50



Serie 1:
 8.8 → 10.6 * 10.4 * 8.4 → 7.4 ↖
 9.5 ↘ 10.3 → 8.7 ← 9.0 ↙ 5.2 ↘
 beste Teiler 1056.3 (2.) 1456.3 (3.) 1824.4 (7.)
 Trefferlage 12.55 mm links, 0.52 mm hoch
 Streuwert 49.66, horizontal: 49.66, vertikal: 49.66



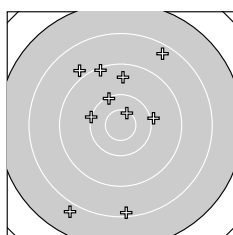
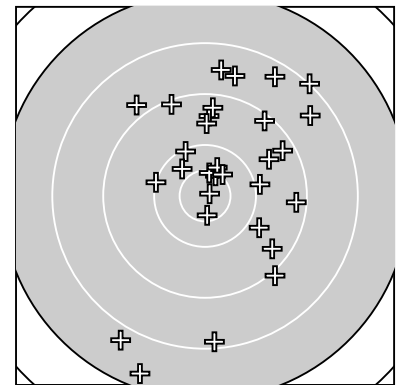
Serie 2:
 7.5 → 8.1 ↗ 7.6 ↑ 10.6 * 6.6 ↑
 6.8 ↑ 9.1 ← 7.3 ↗ 9.6 ↓ 8.1 ↑
 beste Teiler 903.2 (14.) 3643.7 (19.) 4960.1 (17.)
 Trefferlage 18.19 mm rechts, 46.40 mm hoch
 Streuwert 45.84, horizontal: 40.53, vertikal: 50.60



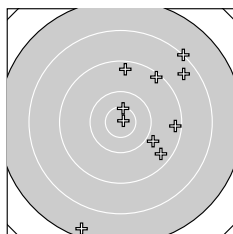
Serie 3:
 8.8 ↓ 7.9 ↖ 9.4 ↓ 8.5 ↗ 8.7 ↓
 8.7 ↑ 8.3 → 7.3 ↗ 9.2 ↘ 10.4 *
 beste Teiler 1488.6 (30.) 4077.2 (23.) 4658.3 (29.)
 Trefferlage 9.03 mm rechts, 10.24 mm hoch
 Streuwert 45.03, horizontal: 38.72, vertikal: 50.55

Unterschrift des Schützen

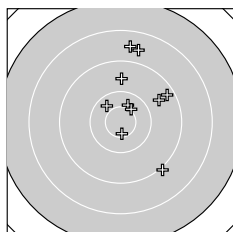
Ergebnis: **269** (281.2)
 Serien: 89 88 92
 Zähler: 10 11 7 2 0 0 0 0 0 0
 Innenzehner: 6
 weiteste: 9288 (14), 8204 (5), 7526 (19)
 beste Teiler 248.2 (16.) 957.4 (26.) 1113.2 (4.)
 Trefferlage 9.72 mm rechts, 10.97 mm hoch
 Streuwert 32.73, horizontal: 24.94, vertikal: 38.99



Serie 1:
 8.8 ↙ 9.1 ↖ 10.1 ↖ 10.5 * 7.8 ↘
 10.1 ↖ 8.2 ↓ 10.0 → 9.5 ↑ 8.3 ↗
 beste Teiler 1113.2 (4.) 2380.9 (3.) 2500.8 (6.)
 Trefferlage 5.22 mm links, 8.89 mm hoch
 Streuwert 36.85, horizontal: 24.65, vertikal: 45.91



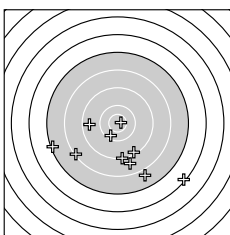
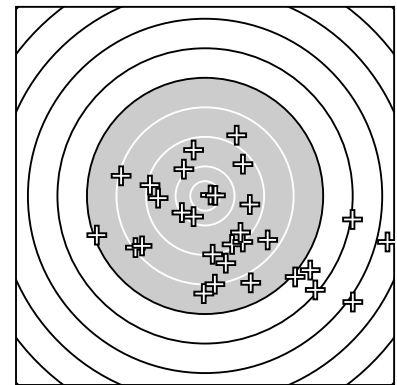
Serie 2:
 9.4 ↘ 9.8 ↘ 8.5 ↗ 7.3 ↓ 9.3 ↑
 10.9 * 10.5 * 9.3 → 8.1 ↗ 9.2 ↗
 beste Teiler 248.2 (16.) 1146.1 (17.) 3080.7 (12.)
 Trefferlage 21.26 mm rechts, 5.50 mm hoch
 Streuwert 35.47, horizontal: 26.82, vertikal: 42.39



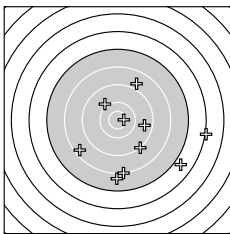
Serie 3:
 8.6 ↑ 9.0 ↘ 9.3 ↗ 10.4 * 8.6 ↑
 10.6 * 10.3 ↖ 10.5 * 9.6 ↗ 9.6 ↑
 beste Teiler 957.4 (26.) 1357.8 (28.) 1513.7 (24.)
 Trefferlage 13.15 mm rechts, 18.54 mm hoch
 Streuwert 24.08, horizontal: 16.34, vertikal: 29.88

Unterschrift des Schützen

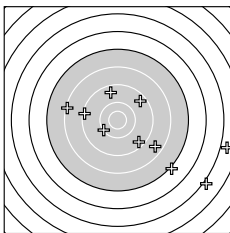
Ergebnis: **240** (252.0)
 Serien: 83 80 77
 Zähler: 4 10 7 4 3 0 2 0 0 0
 Innenzehner: 2
 weiteste: 15932 (27), 15401 (25), 12645 (12)
 beste Teiler 471.0 (3.) 878.1 (19.) 2006.7 (6.)
 Trefferlage 18.75 mm rechts, 27.93 mm tief
 Streuwert 49.77, horizontal: 59.28, vertikal: 37.95



Serie 1:
 7.2 ↙ 6.2 ↘ 10.8 * 9.1 ↓ 9.2 ↘
 10.2 ↘ 9.5 ← 8.1 ↙ 8.7 ↓ 7.7 ↘
 beste Teiler 471.0 (3.) 2006.7 (6.) 3981.4 (7.)
 Trefferlage 1.65 mm links, 39.61 mm tief
 Streuwert 41.75, horizontal: 52.31, vertikal: 27.40



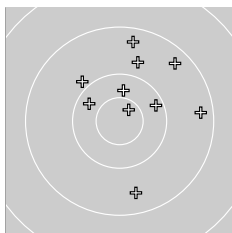
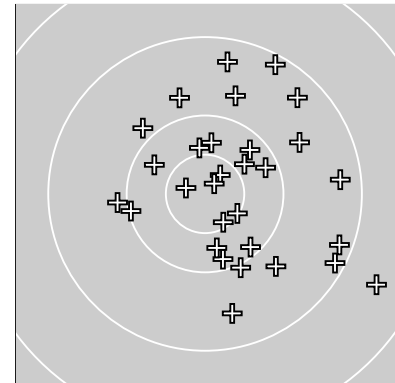
Serie 2:
 8.3 ↙ 6.0 → 8.1 ↓ 9.5 → 7.8 ↓
 9.9 ↘ 8.7 ↗ 6.7 ↘ 10.6 * 9.0 ↘
 beste Teiler 878.1 (19.) 2888.1 (16.) 3860.2 (14.)
 Trefferlage 25.52 mm rechts, 25.42 mm tief
 Streuwert 47.32, horizontal: 51.10, vertikal: 43.22



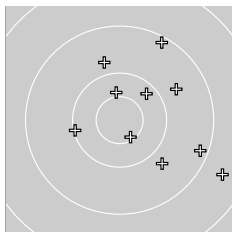
Serie 3:
 9.3 ↘ 7.0 ↘ 9.2 ← 8.5 ↘ 4.9 ↘
 9.5 ↑ 4.7 → 9.4 ↗ 10.1 ↙ 8.1 ←
 beste Teiler 2415.6 (29.) 4007.4 (26.) 4185.8 (28.)
 Trefferlage 32.39 mm rechts, 18.78 mm tief
 Streuwert 59.26, horizontal: 72.49, vertikal: 42.06

Unterschrift des Schützen

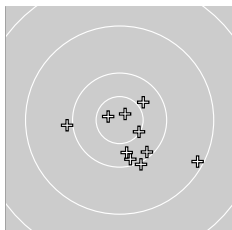
Ergebnis: **285** (298.6)
 Serien: 94 93 98
 Zähler: 16 13 1 0 0 0 0 0 0
 Innenzehner: 6
 weiteste: 6186 (18), 4693 (26), 4690 (14)
 beste Teiler 438.3 (28.) 637.6 (27.) 772.4 (9.)
 Trefferlage 10.53 mm rechts, 2.35 mm hoch
 Streuwert 20.61, horizontal: 19.89, vertikal: 21.31



Serie 1:
 10.2 ↗ 10.4 ↑ 9.4 ↑ 9.8 ↑ 9.4 ↗
 9.5 ↓ 10.3 ↖ 9.9 ↖ 10.7 * 9.3 →
 beste Teiler 772.4 (9.) 1643.5 (2.) 1863.3 (7.)
 Trefferlage 8.82 mm rechts, 13.13 mm hoch
 Streuwert 20.49, horizontal: 18.92, vertikal: 21.94



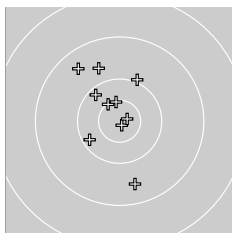
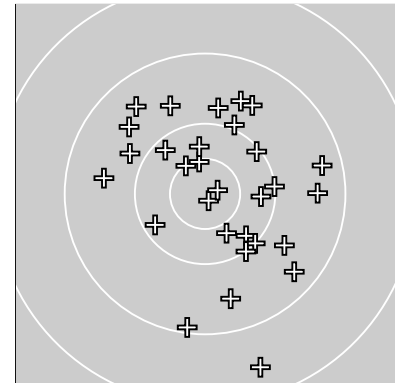
Serie 2:
 9.8 ↑ 10.1 ← 10.6 * 9.2 ↗ 10.4 *
 10.2 ↗ 9.8 ↘ 8.6 ↘ 9.2 → 9.7 →
 beste Teiler 1073.7 (13.) 1478.0 (15.) 2002.6 (16.)
 Trefferlage 15.92 mm rechts, 3.41 mm hoch
 Streuwert 23.60, horizontal: 23.75, vertikal: 23.45



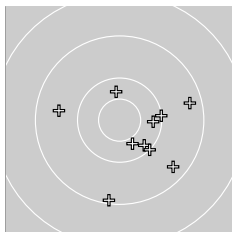
Serie 3:
 10.1 ↘ 10.2 ↓ 10.3 ↓ 9.9 ← 10.5 *
 9.2 ↘ 10.7 * 10.8 * 10.4 ↗ 10.0 ↓
 beste Teiler 438.3 (28.) 637.6 (27.) 1203.2 (25.)
 Trefferlage 6.85 mm rechts, 9.48 mm tief
 Streuwert 14.96, horizontal: 17.39, vertikal: 12.04

Unterschrift des Schützen

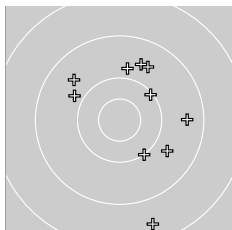
Ergebnis: **284** (296.6)
 Serien: 97 96 91
 Zähler: 15 14 1 0 0 0 0 0 0
 Innenzehner: 4
 weiteste: 6480 (27), 4798 (14), 4289 (16)
 beste Teiler 272.3 (6.) 465.1 (7.) 1157.5 (9.)
 Trefferlage 5.41 mm rechts, 1.17 mm hoch
 Streuwert 22.32, horizontal: 20.00, vertikal: 24.42



Serie 1:
 10.2 ↙ 9.5 ↘ 10.2 ↘ 9.7 ↗ 10.0 ↗
 10.9 * 10.8 * 10.5 * 10.5 * 9.5 ↓
 beste Teiler 272.3 (6.) 465.1 (7.) 1157.5 (9.)
 Trefferlage 5.25 mm links, 7.45 mm hoch
 Streuwert 17.09, horizontal: 11.84, vertikal: 21.07



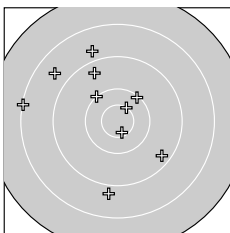
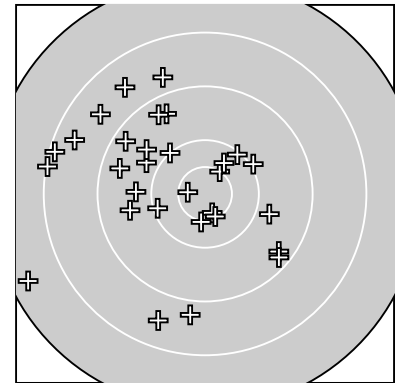
Serie 2:
 10.2 → 10.2 ↘ 10.4 ↘ 9.1 ↓ 10.1 →
 9.3 → 9.4 ↘ 10.0 ↘ 10.3 ↑ 9.6 ←
 beste Teiler 1593.1 (13.) 1696.6 (19.) 1993.2 (11.)
 Trefferlage 11.37 mm rechts, 8.75 mm tief
 Streuwert 20.83, horizontal: 22.10, vertikal: 19.49



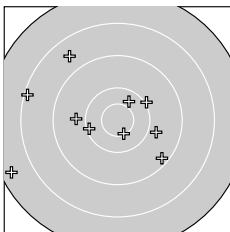
Serie 3:
 9.6 ↗ 9.8 ↑ 9.6 ↗ 9.7 ↘ 10.1 ↗
 9.8 ↖ 8.5 ↓ 9.6 ↖ 10.0 ↘ 9.5 →
 beste Teiler 2377.5 (25.) 2517.4 (29.) 3039.2 (26.)
 Trefferlage 10.13 mm rechts, 4.81 mm hoch
 Streuwert 26.45, horizontal: 21.69, vertikal: 30.49

Unterschrift des Schützen

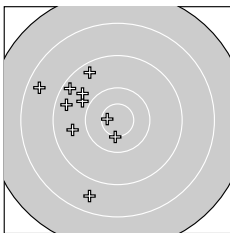
Ergebnis: **270** (283.6)
 Serien: 90 90 90
 Zähler: 10 11 8 1 0 0 0 0 0 0
 Innenzehner: 5
 weiteste: 9168 (16), 7435 (7), 7252 (12)
 beste Teiler 807.8 (24.) 940.7 (6.) 1152.0 (18.)
 Trefferlage 18.21 mm links, 5.11 mm hoch
 Streuwert 29.55, horizontal: 30.96, vertikal: 28.08



Serie 1:
 10.0 ↘ 9.4 ↘ 9.3 ↘ 10.1 ↗ 10.5 *
 10.6 * 8.1 ← 8.8 ↖ 8.8 ↓ 8.6 ↖
 beste Teiler 940.7 (6.) 1240.0 (5.) 2364.6 (4.)
 Trefferlage 12.32 mm links, 9.70 mm hoch
 Streuwert 31.94, horizontal: 31.07, vertikal: 32.78



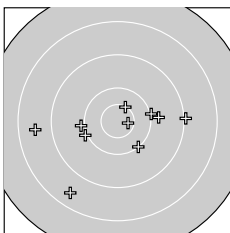
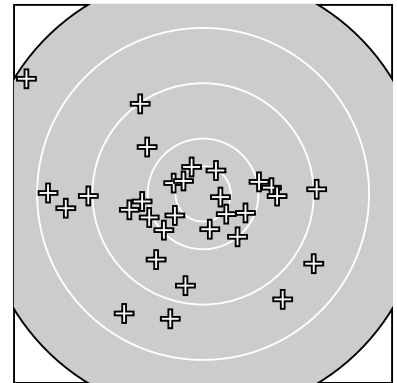
Serie 2:
 9.8 ← 8.2 ← 10.3 ↗ 8.6 ↘ 10.1 ←
 7.4 ← 10.0 ↗ 10.5 * 9.8 → 9.3 ↘
 beste Teiler 1152.0 (18.) 1683.6 (13.) 2303.0 (15.)
 Trefferlage 14.33 mm links, 0.16 mm hoch
 Streuwert 34.28, horizontal: 41.05, vertikal: 25.80



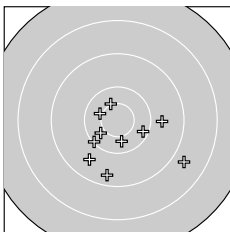
Serie 3:
 8.6 ↓ 9.8 ↖ 9.6 ← 10.7 * 10.5 *
 9.3 ↖ 8.4 ↖ 9.4 ← 9.4 ↖ 9.7 ↖
 beste Teiler 807.8 (24.) 1315.9 (25.) 3087.7 (22.)
 Trefferlage 27.97 mm links, 5.46 mm hoch
 Streuwert 22.66, horizontal: 16.63, vertikal: 27.38

Unterschrift des Schützen

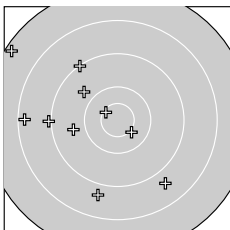
Ergebnis: **276** (288.2)
 Serien: 94 95 87
 Zähler: 14 9 6 1 0 0 0 0 0 0
 Innenzehner: 6
 weiteste: 9526 (27), 7005 (28), 6472 (6)
 beste Teiler 799.0 (2.) 1059.4 (24.) 1208.4 (7.)
 Trefferlage 8.36 mm links, 7.09 mm tief
 Streuwert 29.17, horizontal: 33.40, vertikal: 24.21



Serie 1:
 10.0 → 10.7 * 10.1 ↘ 9.8 → 9.0 →
 8.5 ↙ 10.5 * 8.6 ← 10.0 ← 10.0 ←
 beste Teiler 799.0 (2.) 1208.4 (7.) 2487.2 (3.)
 Trefferlage 1.27 mm links, 7.44 mm tief
 Streuwert 27.97, horizontal: 35.00, vertikal: 18.44



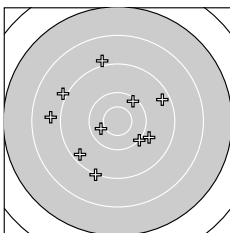
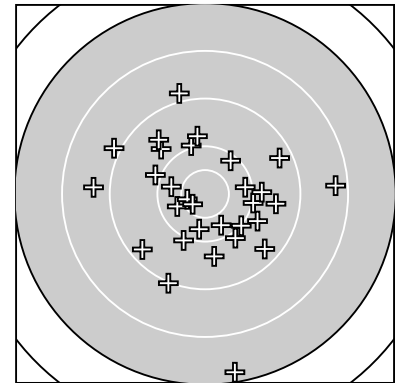
Serie 2:
 9.4 ↓ 10.4 ↓ 10.1 ↙ 10.5 * 8.7 ↘
 9.7 → 10.2 ↘ 10.4 * 10.4 ↙ 9.6 ↙
 beste Teiler 1322.2 (14.) 1414.5 (18.) 1601.6 (19.)
 Trefferlage 2.76 mm rechts, 13.71 mm tief
 Streuwert 20.66, horizontal: 23.83, vertikal: 16.91



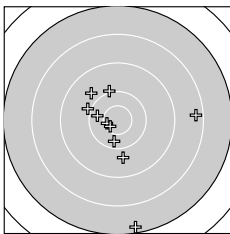
Serie 3:
 10.5 * 9.7 ↖ 9.1 ↖ 10.6 * 8.7 ↘
 9.0 ← 7.3 ↖ 8.3 ← 9.7 ← 8.7 ↓
 beste Teiler 1059.4 (24.) 1389.9 (21.) 3297.2 (22.)
 Trefferlage 26.58 mm links, 0.11 mm tief
 Streuwert 34.63, horizontal: 35.20, vertikal: 34.05

Unterschrift des Schützen

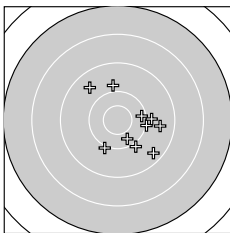
Ergebnis: **276** (289.9)
 Serien: 90 92 94
 Zähler: 12 13 4 1 0 0 0 0 0 0
 Innenzehner: 2
 weiteste: 9480 (17), 6858 (12), 5860 (5)
 beste Teiler 849.2 (16.) 975.3 (15.) 1598.7 (4.)
 Trefferlage 1.24 mm rechts, 4.09 mm tief
 Streuwert 27.86, horizontal: 27.78, vertikal: 27.93



Serie 1:
 9.3 ↙ 8.9 ↑ 9.3 ↗ 10.4 ↖ 8.7 ←
 9.0 ↓ 8.9 ↖ 10.2 ↗ 9.8 ↘ 10.0 ↘
 beste Teiler 1598.7 (4.) 2196.1 (8.) 2525.9 (10.)
 Trefferlage 8.75 mm links, 0.28 mm hoch
 Streuwert 30.90, horizontal: 32.67, vertikal: 29.03



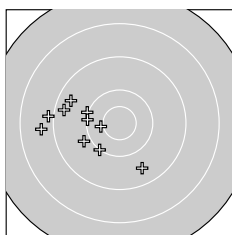
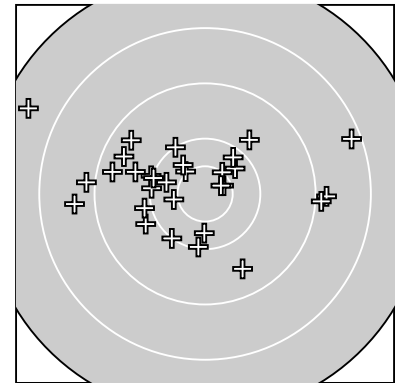
Serie 2:
 9.7 ↓ 8.3 → 10.3 ↓ 9.9 ↖ 10.6 *
 10.6 * 7.3 ↓ 10.3 ← 10.0 ↑ 9.7 ↖
 beste Teiler 849.2 (16.) 975.3 (15.) 1811.3 (18.)
 Trefferlage 0.42 mm links, 8.60 mm tief
 Streuwert 31.14, horizontal: 27.22, vertikal: 34.62



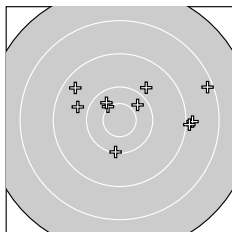
Serie 3:
 9.6 ↖ 10.0 → 10.3 ↘ 9.9 → 9.6 →
 9.8 ↑ 10.0 ↓ 10.2 → 9.9 ↘ 9.4 ↘
 beste Teiler 1843.5 (23.) 2134.0 (28.) 2564.1 (22.)
 Trefferlage 12.91 mm rechts, 3.96 mm tief
 Streuwert 20.51, horizontal: 20.31, vertikal: 20.71

Unterschrift des Schützen

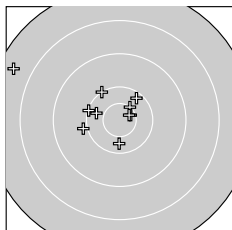
Ergebnis: **280** (292.7)
 Serien: 92 92 96
 Zähler: 16 9 4 1 0 0 0 0 0 0
 Innenzehner: 5
 weiteste: 8876 (29), 7078 (14), 5921 (1)
 beste Teiler 809.5 (30.) 916.7 (23.) 1247.5 (24.)
 Trefferlage 9.46 mm links, 4.65 mm hoch
 Streuwert 25.67, horizontal: 32.67, vertikal: 15.84



Serie 1:
 8.7 ← 10.0 ↖ 8.9 ← 9.3 ↖ 10.4 *
 9.4 ↖ 9.5 ↓ 9.9 ↖ 10.0 ↗ 10.1 ←
 beste Teiler 1435.2 (5.) 2432.5 (10.) 2512.2 (9.)
 Trefferlage 27.89 mm links, 3.19 mm tief
 Streuwert 18.94, horizontal: 21.87, vertikal: 15.46



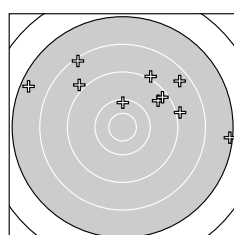
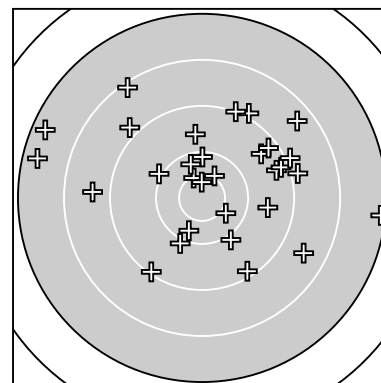
Serie 2:
 8.9 → 10.5 * 10.3 ↗ 8.2 → 9.8 ↗
 9.0 → 9.4 ↖ 9.7 ← 10.1 ↓ 10.4 ↖
 beste Teiler 1339.0 (12.) 1641.6 (20.) 1778.2 (13.)
 Trefferlage 12.08 mm rechts, 8.97 mm hoch
 Streuwert 27.58, horizontal: 35.89, vertikal: 15.24



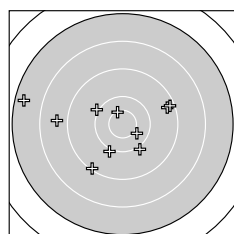
Serie 3:
 10.2 ↗ 10.3 ↖ 10.6 * 10.5 * 9.9 ←
 10.3 ↓ 10.1 ↖ 10.1 ← 7.5 ↖ 10.7 *
 beste Teiler 809.5 (30.) 916.7 (23.) 1247.5 (24.)
 Trefferlage 12.57 mm links, 8.17 mm hoch
 Streuwert 22.39, horizontal: 27.73, vertikal: 15.29

Unterschrift des Schützen

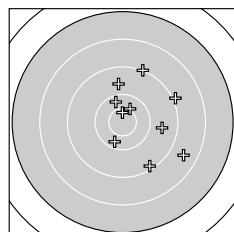
Ergebnis: **268** (278.4)
 Serien: 83 92 93
 Zähler: 10 11 6 3 0 0 0 0 0 0
 Innenzehner: 3
 weiteste: 9754 (7), 9282 (6), 9192 (14)
 beste Teiler 859.1 (29.) 1173.7 (12.) 1373.8 (27.)
 Trefferlage 6.55 mm rechts, 11.10 mm hoch
 Streuwert 35.10, horizontal: 42.14, vertikal: 26.23



Serie 1:
 9.0 ↗ 8.9 → 9.5 ↗ 9.3 ↗ 8.2 ↖
 7.3 ↖ 7.2 → 8.4 ↗ 8.9 ↖ 10.2 ↑
 beste Teiler 2224.0 (10.) 4004.4 (3.) 4513.0 (4.)
 Trefferlage 12.96 mm rechts, 29.98 mm hoch
 Streuwert 40.74, horizontal: 54.29, vertikal: 19.28



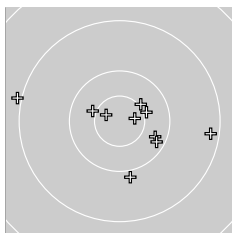
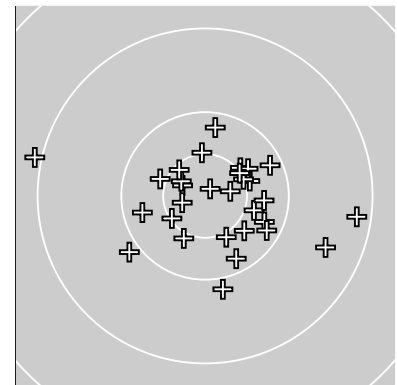
Serie 2:
 10.4 ↘ 10.5 * 9.3 → 7.4 ↖ 9.1 ↙
 10.0 ↖ 10.0 ↘ 9.2 → 8.7 ← 10.0 ↙
 beste Teiler 1173.7 (12.) 1535.3 (11.) 2677.6 (16.)
 Trefferlage 10.43 mm links, 1.58 mm tief
 Streuwert 33.20, horizontal: 41.89, vertikal: 21.20



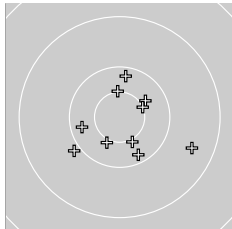
Serie 3:
 8.6 ↘ 10.3 ↓ 9.1 ↑ 9.7 ↑ 9.6 →
 9.0 → 10.5 * 9.2 ↘ 10.6 * 10.3 ↑
 beste Teiler 859.1 (29.) 1373.8 (27.) 1919.9 (22.)
 Trefferlage 17.12 mm rechts, 4.90 mm hoch
 Streuwert 25.56, horizontal: 23.01, vertikal: 27.88

Unterschrift des Schützen

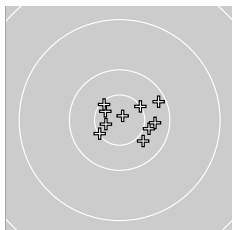
Ergebnis: **295** (308.9)
 Serien: 97 98 100
 Zähler: 25 5 0 0 0 0 0 0 0 0
 Innenzehner: 17
 weiteste: 5211 (1), 4573 (4), 3913 (20)
 beste Teiler 260.0 (26.) 711.2 (23.) 739.5 (5.)
 Trefferlage 4.04 mm rechts, 1.58 mm tief
 Streuwert 14.90, horizontal: 18.03, vertikal: 10.89



Serie 1:
 9.0 ← 10.7 * 10.5 * 9.2 → 10.7 *
 10.3 ↘ 10.4 * 10.4 * 9.9 ↓ 10.2 ↘
 beste Teiler 739.5 (5.) 766.3 (2.) 1347.1 (3.)
 Trefferlage 4.72 mm rechts, 1.83 mm tief
 Streuwert 19.54, horizontal: 25.09, vertikal: 11.59



Serie 2:
 10.2 ↑ 10.5 * 10.2 ↘ 10.4 * 10.4 *
 10.5 * 10.5 * 9.9 ↙ 10.3 ← 9.5 ↘
 beste Teiler 1252.0 (16.) 1292.3 (17.) 1386.4 (12.)
 Trefferlage 3.04 mm rechts, 3.45 mm tief
 Streuwert 15.45, horizontal: 16.79, vertikal: 13.99



Serie 3:
 10.4 * 10.5 * 10.7 * 10.3 → 10.5 *
 10.9 * 10.7 * 10.2 ↗ 10.6 * 10.4 ↘
 beste Teiler 260.0 (26.) 711.2 (23.) 833.7 (27.)
 Trefferlage 4.36 mm rechts, 0.53 mm hoch
 Streuwert 9.43, horizontal: 11.60, vertikal: 6.57

Unterschrift des Schützen